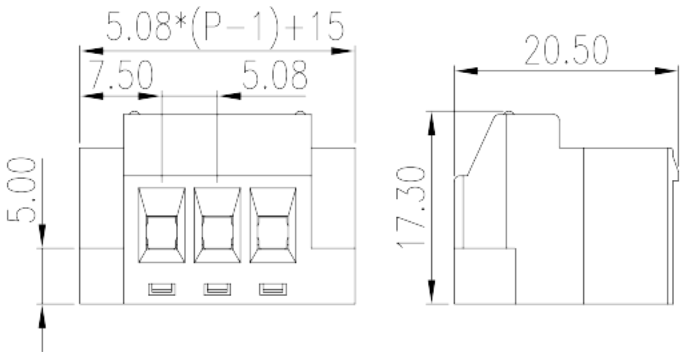
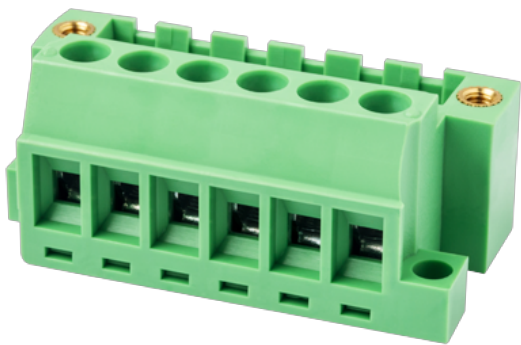


2EHDRSM-XXP

PCB >

:2026-02-09 :V1



Pitch: 5.08 mm, 300V, 12/15A

	Special type terminal blocks, Screw connection
	Special type terminal blocks
(mm)	5.08
	Green (default)
	Screw connection
	With lock flange
(mm)	5.08*(P-1)+15
(mm)	20.50
(mm)	17.3
()	02~20P
	PA
	I
UL 94	V0
	COPPER ALLOY
	Tin PLATED

-IEC

(V)	630
(A)	18
(II/2)(V)	600
(III/2)(V)	320
(III/3)(V)	250
(II/2)(KV)	4
(III/2)(KV)	4
(III/3)(KV)	4
(mm ²)	0.5
(mm ²)	2.5
(mm ²)	0.5
(mm ²)	2.5
(mm ²) , ,	0.25
(mm ²) , ,	2.5
(mm ²) , ,	0.25
(mm ²) , ,	1.5
2 (mm ²)	1.5
2 (mm ²)	1.5
(mm ²) ² , ,	0.25
(mm ²) ² , ,	0.75
² (mm ²) , ,	0.5
² (mm ²) , ,	1.5
	M2.5
Width)(mm) (Blade thickness x	0.6x3.5
Philips	PH1
(N.m)	0.75
	7~8

-UL

(UL/CUL Group B)(V)	300
(UL/CUL Group B)(A)	12/15

&

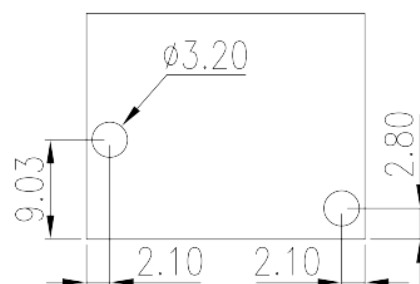
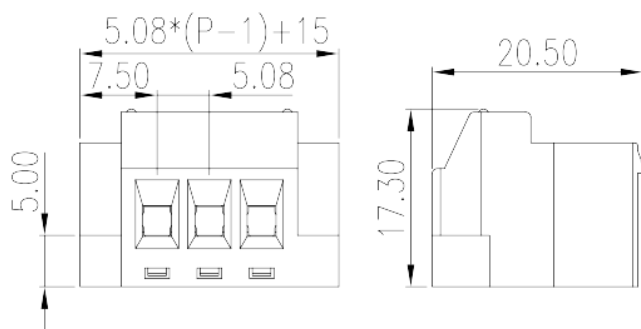
(YES or NO)	YES
가 (YES or NO)	YES
	115
	-40

UL

(Group B)(AWG)	28~12
(Group B)(V)	300
(Group B)(A)	12/15

CUL

(Group B)(AWG)	28~12
(Group B)(V)	300
(Group B)(A)	12/15





Delight Through Connections