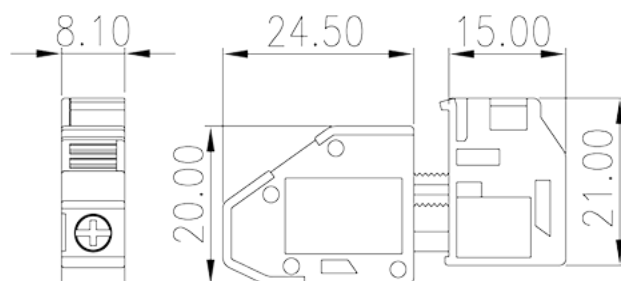
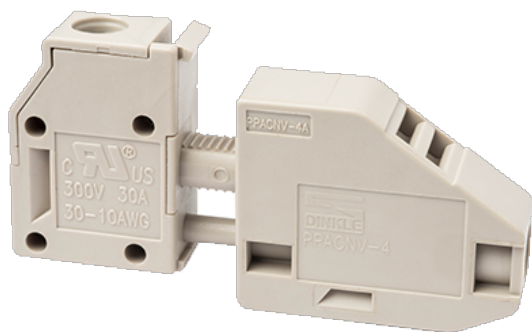


PPACNV-4

PCB >

:2026-07-04 :1.2



M3, 300V, 30A

	Panel Feed-Through, Screw Connection
	Panel Feed-Through
	Grey (default)
	Screw connection
	Without
(mm)	10.1
(mm)	24.5+15
(mm)	21
()	1P
	PA
	I
UL 94	V0
	500M at DC 500V
	COPPER ALLOY
	Tin PLATED

-IEC

(V)	320V (2.5 ~ 4.0mm mounting plate), 400V (1.0 ~ 2.5mm mounting plate), 500V (plastic mounting plate)
(A)	41
(III/3)(V)	500
(III/3)(KV)	6
(mm ²)	0.2
(mm ²)	6
(mm ²)	0.2
(mm ²)	6
(mm ²) , ,	0.25
(mm ²) , ,	6
(mm ²) , ,	0.25
(mm ²) , ,	4
2 (mm ²)	0.2
2 (mm ²)	1.5
2 (mm ²)	0.2
2 (mm ²)	1.5
(mm ²) 2 , ,	0.25
(mm ²) 2 , ,	1.5
2 (mm ²) , ,	0.5
2 (mm ²) , ,	2.5
	M4
Width)(mm) (Blade thickness x	0.8x4.0
Philips	PH1
(N.m)	0.59
	9

-UL

(UL/CUL Group B)(V)	300
---------------------	-----

(UL/CUL Group B)(A)		30
(UL/CUL Group C)(V)		600
(UL/CUL Group C)(A)		5
UL/CUL	AWG	30
UL/CUL	AWG	10
UL/CUL	AWG	30
UL/CUL	AWG	10

&

(YES or NO)		YES
가 (YES or NO)		YES
		120
		-40

UL

(Group B)(AWG)		30~10
(Group B)(V)		300
(Group B)(A)		30
(Group C)(AWG)		30~10
(Group C)(V)		300
(Group C)(A)		30

CUL

(Group B)(AWG)		30~10
(Group B)(V)		300
(Group B)(A)		30
(Group C)(AWG)		30~10
(Group C)(V)		300
(Group C)(A)		30

VDE

(mm ²)		0.2~6
(V)		320V (2.5 ~ 4.0mm mounting plate), 400V (1.0 ~ 2.5mm mounting plate), 500V (plastic mounting plate)
(A)		41

