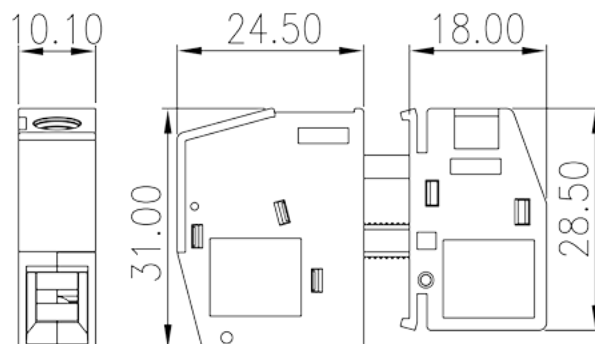
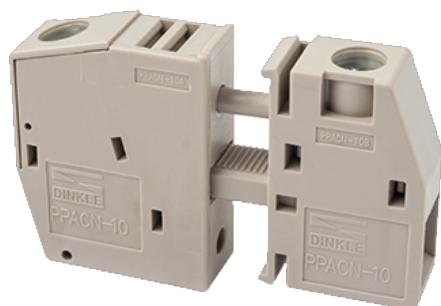


PPACN-10

PCB >

:2026-07-04 :1.2



M4, 300V, 65A

	Panel Feed-Through, Screw Connection
	Panel Feed-Through
	Grey (default)
	Screw connection
	Without
(mm)	10.1
(mm)	24.5+18
(mm)	31
()	1P
	PA
	I
UL 94	V0
	500M at DC 500V
	COPPER ALLOY
	Tin PLATED

-IEC

(V)	320V (2.5 ~ 4.0mm mounting plate), 500V (1.0 ~ 2.5mm mounting plate and plastic mounting plate)
(A)	76
(III/3)(V)	320V (2.5 ~ 4.0mm mounting plate), 500V (1.0 ~ 2.5mm mounting plate and plastic mounting plate)
(III/3)(KV)	6
(mm ²)	0.5
(mm ²)	16
(mm ²)	0.5
(mm ²)	16
(mm ²) , ,	0.5
(mm ²) , ,	16
(mm ²) , ,	0.5
(mm ²) , ,	16
2 (mm ²)	0.5
2 (mm ²)	4
2 (mm ²)	0.5
2 (mm ²)	4
(mm ²) 2 , ,	0.5
(mm ²) 2 , ,	2.5
2 (mm ²) , ,	0.5
2 (mm ²) , ,	6
	M4
Width)(mm) (Blade thickness x	1.0x5.5
Philips	PZ2
(N.m)	1.7
	10

-UL

(UL/CUL Group B)(V)	300
---------------------	-----

(UL/CUL Group B)(A)		65
(UL/CUL Group C)(V)		300
(UL/CUL Group C)(A)		65
(UL/CUL Group D)(V)		600
(UL/CUL Group D)(A)		5
UL/CUL	AWG	24
UL/CUL	AWG	6
UL/CUL	AWG	24
UL/CUL	AWG	6

&

(YES or NO)		YES
가 (YES or NO)		YES
		115
		-40

UL

(Group B)(AWG)		24~6
(Group B)(V)		300
(Group B)(A)		65
(Group C)(AWG)		24~6
(Group C)(V)		300
(Group C)(A)		65

CUL

(Group B)(AWG)		24~6
(Group B)(V)		300
(Group B)(A)		65
(Group C)(AWG)		24~6
(Group C)(V)		300
(Group C)(A)		65

VDE

(mm ²)		0.5~16
(V)		320V (2.5 ~ 4.0mm mounting plate), 500V (1.0 ~ 2.5mm mounting plate and plastic mounting plate)

(A)

76

