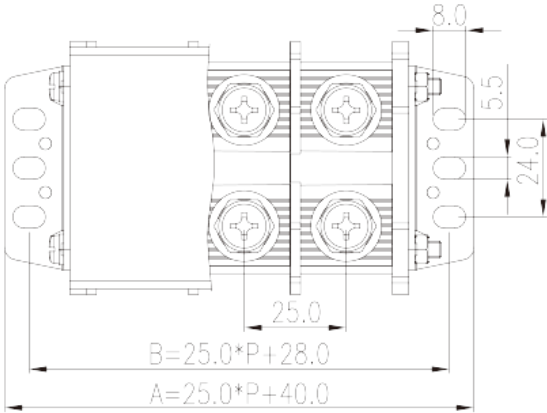
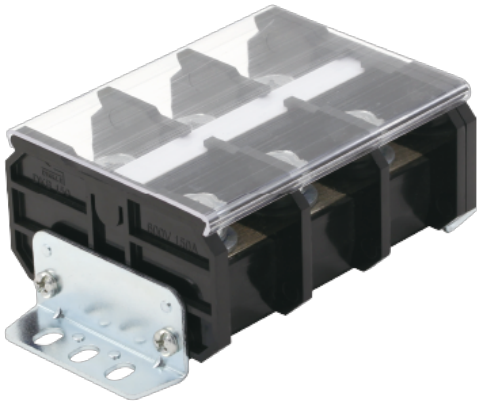


# DKB100N-XXPCK

NEMA

>

:2026-02-09



Pitch : 25.00mm, M8, 600V, 200A

	Barrier terminals blocks, Panel Mounting
	Panel Mounting
(mm)	25.00
	Black (default)
	Screw connection
	Panel Mounting
(mm)	25*P+40
(mm)	62
(mm)	44.7
( )	02P~12P
	Single level
	4~24
	PC
	IIIa
UL 94	V2
	1000M at DC 500V

		Copper Alloy
		Ni plated
<b>-IEC</b>		
(V)		800
(A)		150
(III/3)(V)		630
(II/2)(KV)		8
(III/2)(KV)		8
(III/3)(KV)		8
(mm <sup>2</sup> )		10
(mm <sup>2</sup> )		50
(mm <sup>2</sup> )		10
(mm <sup>2</sup> )		50
2	(mm <sup>2</sup> )	50
2	(mm <sup>2</sup> )	50
		M8
Philips		PH3
(N.m)		4.2
(N.m)		3.5
(N.m)		4.2
		20~21
		TS-35
		YES
		NO

### -UL

(UL/CUL Group B)(V)		600
(UL/CUL Group B)(A)		200
(UL/CUL Group C)(V)		600
(UL/CUL Group C)(A)		200
UL/CUL	AWG	8
UL/CUL	AWG	3/0(With Ring terminals)
UL/CUL	AWG	8
UL/CUL	AWG	3/0(With Ring terminals)

&amp;

(YES or NO)	YES
가 (YES or NO)	NO
	125
	-40

UL

(Group B) (AWG)	3/0 (With Ring terminals)
(Group B) (V)	600
(Group B) (A)	200
(Group C) (AWG)	3/0 (With Ring terminals)
(Group C) (V)	600
(Group C) (A)	200

CUL

(Group B) (AWG)	3/0 (With Ring terminals)
(Group B) (V)	600
(Group B) (A)	200
(Group C) (AWG)	3/0 (With Ring terminals)
(Group C) (V)	600
(Group C) (A)	200

VDE

(mm <sup>2</sup> )	10~50
(V)	800
(A)	150

--	--

