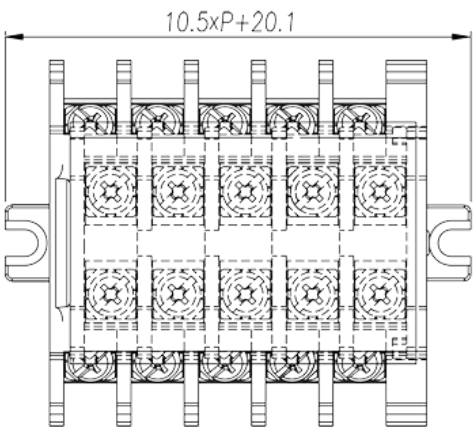
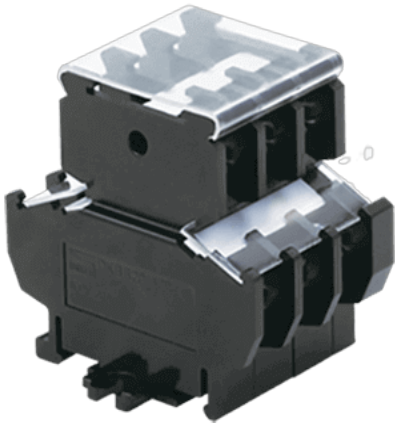


DKBB20-XXPCK

NEMA >

:2026-02-09



Pitch : 10.50mm, M3.5, 600V, 20A

	Barrier terminals blocks, Panel Mounting
	Panel Mounting
(mm)	10.50
	Black (default)
	Screw connection
	Panel Mounting
()	1
	Double level
	PC
	IIIa
UL 94	V2
	Copper Alloy
	Ni plated
-IEC	
(V)	800

(A)	24
(III/3)(V)	800
(II/2)(KV)	8
(III/2)(KV)	8
(III/3)(KV)	8
(mm ²)	0.34
(mm ²)	2.5
(mm ²)	0.34
(mm ²)	2.5
2 (mm ²)	2.5
2 (mm ²)	2.5
	M3.5
Width)(mm) (Blade thickness x	0.8x4.0
Philips	PH1
(N.m)	0.8
(N.m)	0.8
(N.m)	0.96
	8~10

-UL

(UL/CUL Group C)(V)	600
(UL/CUL Group C)(A)	20
(UL/CUL Group D)(V)	600
(UL/CUL Group D)(A)	20
UL/CUL AWG	12
UL/CUL AWG	22
UL/CUL AWG	12
UL/CUL AWG	22

&

(YES or NO)	YES
가 (YES or NO)	NO
	125
	-40

