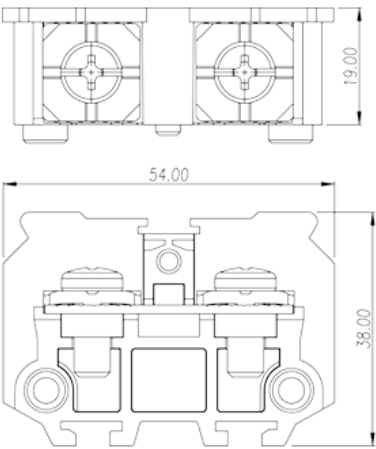
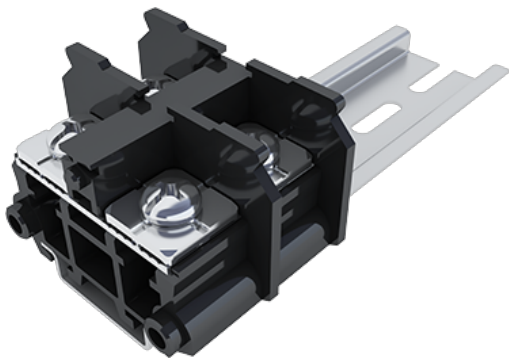


DKB80

NEMA

>

:2026-02-09



M6, 600V, 85A

	Feed-Through single level,Screw Connection
	Feed-Through single level
	Refer to drawing
	Screw connection
	Rail mounting
(mm)	54
(mm)	19
(mm)	41.5(TS-35N) / 49(TS-35/15N)
	Single level
	2
	PC
	IIIa
UL 94	V2
	1000M at DC 500V
	COPPER ALLOY
	Ni PLATED

-IEC

(V)	800
(A)	76(0.75~16mm ²) / 101(25mm ² With Ring terminal)
(III/3)(V)	800
(III/3)(KV)	8
(mm ²)	0.75
(mm ²)	16
(mm ²)	16
(mm ²)	16 (Bare wire) or 25
	M6
Width)(mm) (Blade thickness x	1.0x5.5
Philips	PH2
(N.m)	3
(N.m)	2.5
(N.m)	3
	16~17 The stripping length depends on the specification provided by the cable lug manufacturer
	TS-35N、TS-35/15N
	YES
	NO

-UL

(UL/CUL Group B)(V)	600
(UL/CUL Group B)(A)	85
(UL/CUL Group C)(V)	600
(UL/CUL Group C)(A)	85
UL/CUL AWG	18
UL/CUL AWG	4
UL/CUL AWG	18
UL/CUL AWG	4

&

(YES or NO)	YES
가 (YES or NO)	NO



	125
	-40

UL

(Group B)(AWG)	18~4
(Group B)(V)	600
(Group B)(A)	85
(Group C)(AWG)	18~4
(Group C)(V)	600
(Group C)(A)	85

CUL

(Group B)(AWG)	18~4
(Group B)(V)	600
(Group B)(A)	85
(Group C)(AWG)	18~4
(Group C)(V)	600
(Group C)(A)	85

VDE

(mm ²)	0.75~25
(V)	800
(A)	76(0.75~16mm ²) / 101(25mm ² With Ring terminal)

--	--

