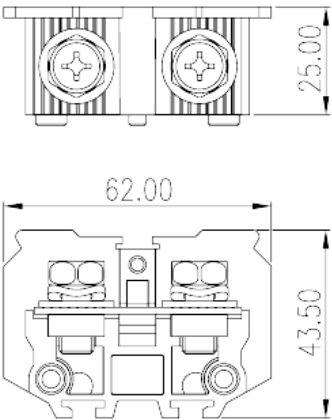
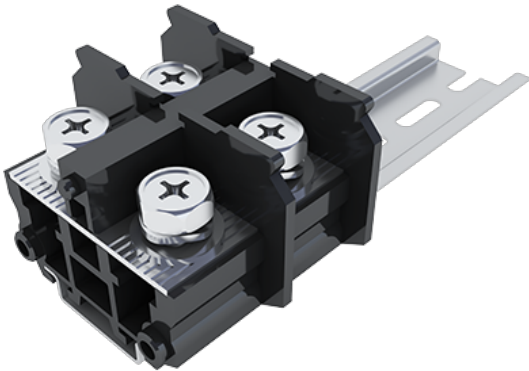


DKB100N

NEMA

>

:2026-02-09



M8, 600V, 115/200A

	Barrier terminal blocks, Screw connection
	Rail mounting terminal blocks
	Black (default)
	Screw connection
	Rail mounting
(mm)	62
(mm)	25
(mm)	43.5
	Single level
	PC
	IIIa
UL 94	V2
	1000M at DC 500V
	Copper Alloy
	Ni plated

-IEC

(V)	800
(A)	150
(III/3)(V)	800
(II/2)(KV)	8
(III/2)(KV)	8
(III/3)(KV)	8
(mm ²)	10
(mm ²)	50
(mm ²)	10
(mm ²)	50
2 (mm ²)	50
2 (mm ²)	50
	M8
Philips	PH3
(N.m)	4.2
(N.m)	3.5
(N.m)	4.2
	20~21
	TS-35
	YES
	NO

-UL

(UL/CUL Group B)(V)	600
(UL/CUL Group B)(A)	200
(UL/CUL Group C)(V)	600
(UL/CUL Group C)(A)	200
UL/CUL AWG	8
UL/CUL AWG	3/0(With Ring terminals)
UL/CUL AWG	8
UL/CUL AWG	3/0(With Ring terminals)

&

--	--



가 (YES or NO)	YES
	125
	-40

UL

(Group B) (AWG)	3/0 (With Ring terminals
(Group B) (V)	600
(Group B) (A)	200
(Group C) (AWG)	3/0 (With Ring terminals
(Group C) (V)	600
(Group C) (A)	200

CUL

(Group B) (AWG)	3/0 (With Ring terminals
(Group B) (V)	600
(Group B) (A)	200
(Group C) (AWG)	3/0 (With Ring terminals
(Group C) (V)	600
(Group C) (A)	200

VDE

(mm ²)	10~50
(V)	800
(A)	150

--	--

