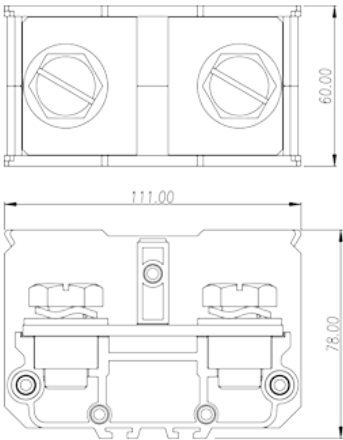
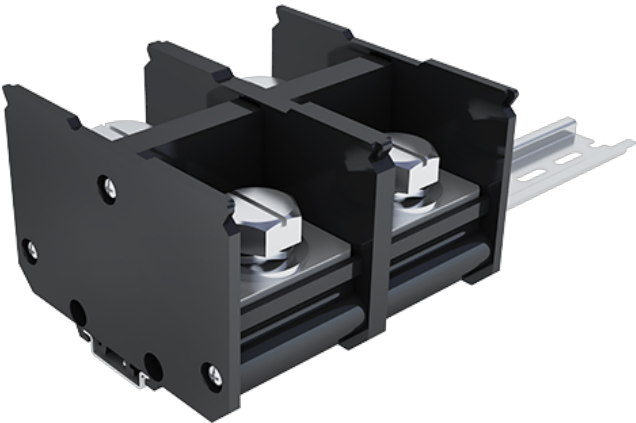


# DKB500

NEMA

>

:2026-02-09



M16, 1000V, 475/620A

	Feed-Through single level, Screw Connection
	Feed-Through single level
	Refer to drawing
	Screw connection
	Rail mounting
(mm)	111
(mm)	60
(mm)	Refer to drawing
	Single level
	2
	PC
	IIIa
UL 94	V2
	1000M at DC 500V
	COPPER ALLOY
	Ni PLATED

## -IEC

(V)	1000
(A)	520
(III/3)(V)	1000
(III/3)(KV)	8
	M16
Width)(mm) (Blade thickness x	1.6x8
(N.m)	10
	The stripping length depends on the specification provided by the cable lug manufacturer
	TS-35N、TS-35/15N
	NO

## -UL

(UL/CUL Group C)(V)	1000
(UL/CUL Group C)(A)	475 (350 ~750 )kcmil) 620 2X(250~350)kcmil
(UL/CUL Group E)(V)	1000
(UL/CUL Group E)(A)	475 (350 ~750 )kcmil) 620 2X(250~350)kcmil
UL/CUL AWG	350(kcmil) 2X250(kcmil)
UL/CUL AWG	750(kcmil) 2X350(kcmil)

## &

(YES or NO)	YES
가 (YES or NO)	NO
	125
	-40

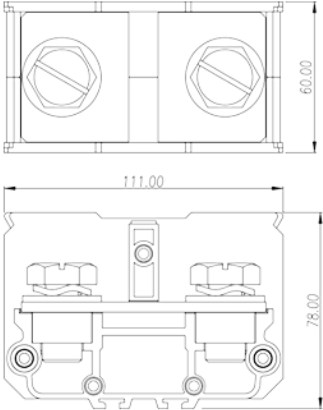

## UL

(Group C)(AWG)	I
(Group E)(AWG)	350~750kcmil 2x ( 250~350 ) kcmil
(Group E)(V)	1000
(Group E)(A)	475 (350 ~750 )kcmil) 620 2X(250~350)kcmil

## CUL

(Group C)(AWG)	350~750kcmil 2x ( 250~350 ) kcmil
----------------	-----------------------------------

(Group C)(V)	1000
(Group C)(A)	475 (350 ~750 )kcmil) 620 2X(250~350)kcmil

	
---	--

