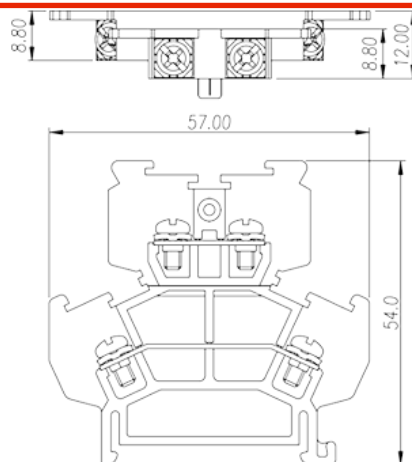
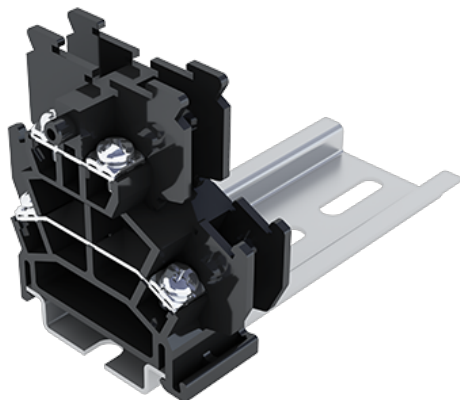


DKBB10

NEMA

>

:2026-07-04



M3,600V,15A

	Feed-Through bi-level, Screw Connection
	Feed-Through bi-level
	Black (default)
	Screw Connection
	Rail Mounting
(mm)	57
(mm)	15.5
(mm)	54
()	1
	Double level
	4
	PC
	IIIa
UL 94	V2
	1000M at DC 500V
	COPPER ALLOY



		Ni Plated
-IEC		
(V)		800
(A)		24
(III/3)(V)		800
(III/3)(KV)		8
(mm ²)		0.34
(mm ²)		2.5
(mm ²)		0.34
(mm ²)		2.5
2	(mm ²)	2.5
2	(mm ²)	2.5
		M3
Width)(mm)	(Blade thickness x	0.8x4.0
Philips		PH2
(N.m)		0.5
(N.m)		0.5
(N.m)		0.6
		7~8
		TS-35
		YES
		NO

-UL

(UL/CUL Group B)(V)		600
(UL/CUL Group B)(A)		15
(UL/CUL Group C)(V)		600
(UL/CUL Group C)(A)		15
UL/CUL	AWG	22
UL/CUL	AWG	14
UL/CUL	AWG	22
UL/CUL	AWG	14

&

(YES or NO)	YES
가 (YES or NO)	YES
	125
	-40

UL

(Group B) (AWG)	22~14
(Group B) (V)	600
(Group B) (A)	15
(Group C) (AWG)	22~14
(Group C) (V)	600
(Group C) (A)	15

CUL

(Group B) (AWG)	22~14
(Group B) (V)	600
(Group B) (A)	15
(Group C) (AWG)	22~14
(Group C) (V)	600
(Group C) (A)	15

