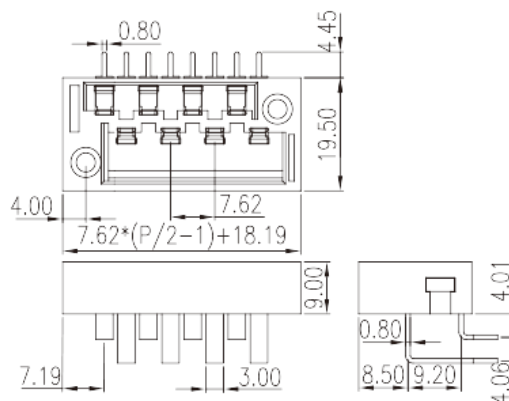
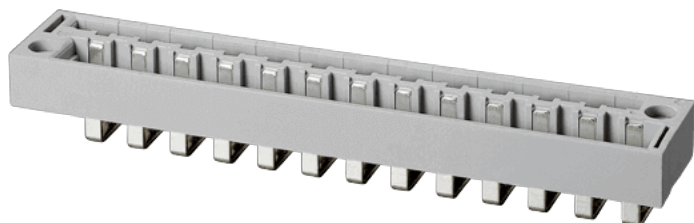


2DSB-14-XX

>

:2026-07-04 :1.1



Pitch : 7.62 mm, 300V, 14A

	Barrier terminal blocks, Screw connection
	Pluggable terminal blocks
(mm)	7.62
	Grey (default)
	Screw connection
	With mounting flange
(x) (mm)	0.8x1.0
PCB (mm)	1.6
	Double level
	PBT
	IIIa
UL 94	V0
	Copper Alloy
	Gold plated

-IEC



(V)	320
(A)	15
(II/2)(V)	320
(III/2)(V)	320
(III/3)(V)	250
(II/2)(KV)	4
(III/2)(KV)	4
(III/3)(KV)	4

-UL

(UL/CUL Group B)(V)	300
(UL/CUL Group B)(A)	14

&

(YES or NO)	YES
	130
	-40

UL

(Group B)(V)	300
(Group B)(A)	14

CUL

(Group B)(V)	300
(Group B)(A)	14

VDE

(V)	320
(A)	15

--	--

