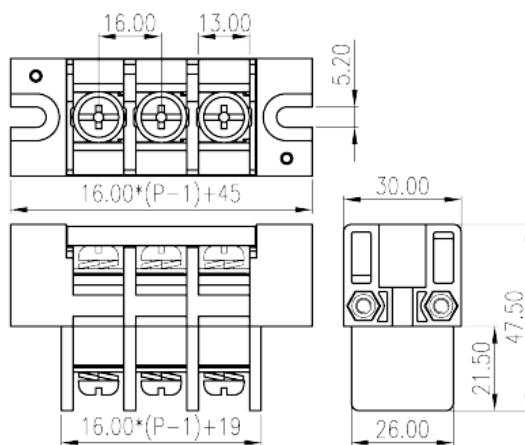
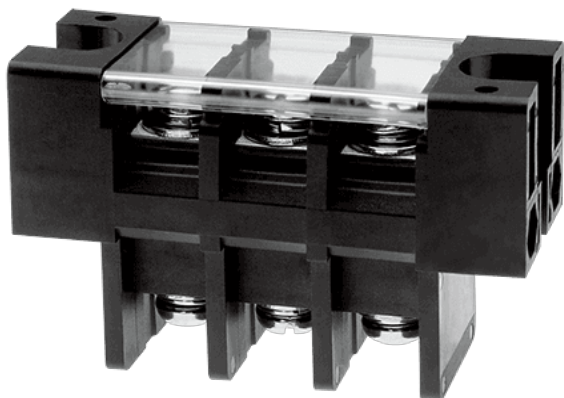


0168-42XX

>

:2026-05-14 :1.1



Pitch: 16mm, M6, 600V, 115A

	Barrier terminal blocks, Screw connection
	Panel Feed Through Terminal Blocks
(mm)	16
	Black (default)
	Screw connection
	With mounting flange
	Single level
	PBT
	IIIa
UL 94	V0
	Copper Alloy
	Tinned
-IEC	
(A)	125
(II/2)(V)	1000

(III/2)(V)		1000
(III/3)(V)		1000
(II/2)(KV)		8
(III/2)(KV)		8
(III/3)(KV)		8
(mm ²)		2.5
(mm ²)		35
(mm ²)		2.5
(mm ²)		35
2	(mm ²)	35
2	(mm ²)	35
		M6
Width)(mm)	(Blade thickness x	1.2x6.5
Philips		PH3
(N.m)		2.5
(N.m)		2.5
(N.m)		3
		The stripping length depends on the specification provided by the cablelug manufacturer.

-UL

(UL/CUL Group B)(V)		600
(UL/CUL Group B)(A)		115
(UL/CUL Group C)(V)		600
(UL/CUL Group C)(A)		115
UL/CUL	AWG	14
UL/CUL	AWG	2
UL/CUL	AWG	14
UL/CUL	AWG	2

&

(YES or NO)		YES
		130
		-40

