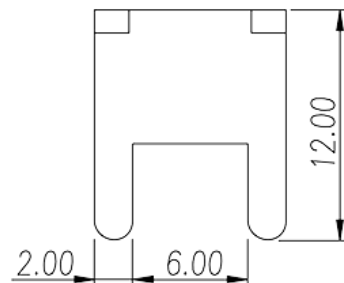
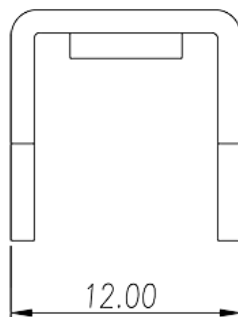
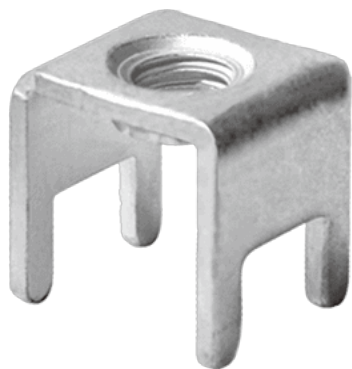


P-831

>

:2026-07-04 :1.2



Pitch : 8.00 / 10.80 mm , 1.2x2.0mm, 85A

	Barrier terminal blocks , Quick terminal blocks
	Quick terminal blocks
(mm)	8.00 / 10.80
(x) (mm)	1.2x2.0

	Copper Alloy
	Tinned

-IEC

	M5
--	----

VDE

(A)	85
-----	----

