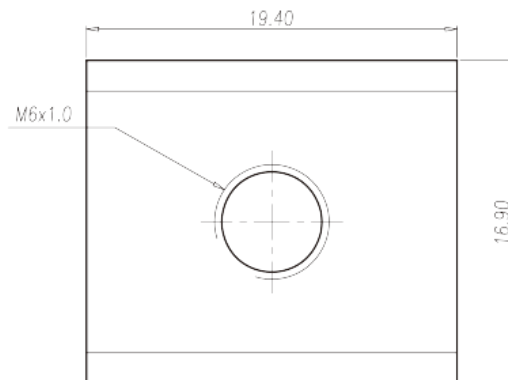


P-840

>

:2026-07-04 :1.2



Pitch : 15.30 / 15.40mm, 1.6x4.0mm, 150A

	Barrier terminal blocks, Quick terminal blocks
	Quick terminal blocks
(mm)	15.30 / 15.40
(x) (mm)	1.6x4.0
	COPPER ALLOY
	Tin PLATED
-IEC	
(A)	150
	M6

