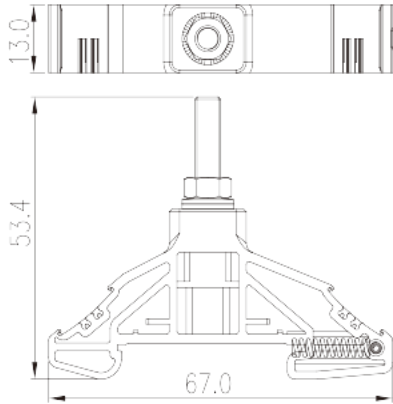
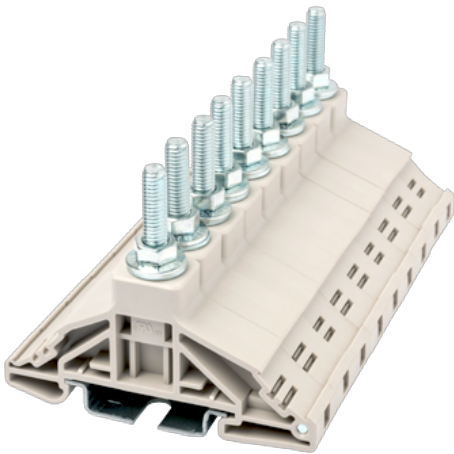


DKM5

DIN>

:2026-02-09

:1.2



M5, 1000V, 85A, Beige (default)

	DIN Rail terminal blocks, Stud Connection
	Feed-Through single level
	Beige (default)
	Stud Connection
	Rail Mounting
(mm)	67
(mm)	13
(mm)	54
	Single level
	1
	PA
	I
UL 94	V0
	500M at DC 500V

-IEC

(V)	1000
(A)	76
(III/3)(V)	1000
(III/3)(KV)	8
(mm ²)	0.5
(mm ²)	16
(mm ²)	0.5
(mm ²)	16
	M5
(N.m)	2
(N.m)	4
	TS-35
	NO
	NO

-UL

(UL/CUL Group E)(V)	1000
(UL/CUL Group E)(A)	85
UL/CUL AWG	16
UL/CUL AWG	4

&

(YES or NO)	NO
가 (YES or NO)	NO
	120
	-40

UL

(Group E)(AWG)	16~4
(Group E)(V)	1000
(Group E)(A)	85

CUL

(Group E)(AWG)	16~4
(Group E)(V)	1000

(Group E)(A)

85

