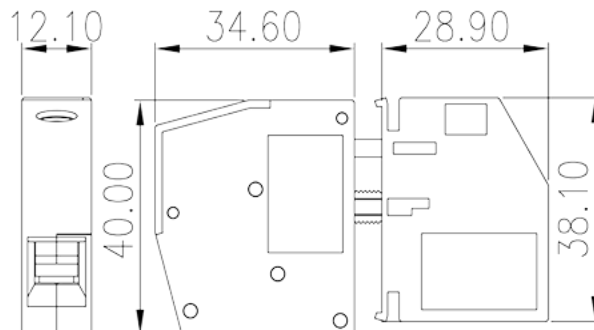
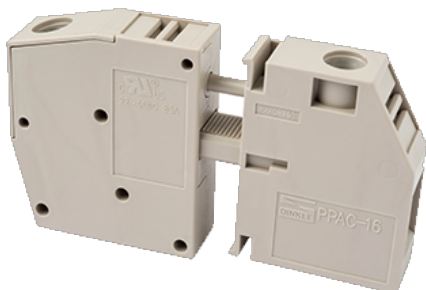


# PPAC-16

PCB >

:2026-07-04 :1.2



M5, 600V, 85A

	Panel Feed-Through, Screw Connection
	Panel Feed-Through
	Grey (default)
	Screw connection
	Without
(mm)	12.1
(mm)	34.6+28.9
(mm)	40.4
( )	1P
	PA
	I
UL 94	V0
	500M at DC 500V
	COPPER ALLOY
	Tin PLATED

**-IEC**

(V)	500
(A)	101
(III/3)(V)	500
(III/3)(KV)	6
(mm <sup>2</sup> )	0.5
(mm <sup>2</sup> )	25
(mm <sup>2</sup> )	0.5
(mm <sup>2</sup> )	16
(mm <sup>2</sup> ) , ,	0.5
(mm <sup>2</sup> ) , ,	16
(mm <sup>2</sup> ) , ,	0.5
(mm <sup>2</sup> ) , ,	16
2 (mm <sup>2</sup> )	0.5
2 (mm <sup>2</sup> )	10
2 (mm <sup>2</sup> )	0.5
2 (mm <sup>2</sup> )	6
(mm <sup>2</sup> ) 2 , ,	0.5
(mm <sup>2</sup> ) 2 , ,	6
2 (mm <sup>2</sup> ) , ,	0.5
2 (mm <sup>2</sup> ) , ,	10
	M5
Philips	PZ2
(N.m)	2.0~2.3
(N.m)	2
(N.m)	3.4
	16~17

**-UL**

(UL/CUL Group B)(V)	600
---------------------	-----



(UL/CUL Group B)(A)	85
(UL/CUL Group C)(V)	600
(UL/CUL Group C)(A)	85
UL/CUL AWG	22
UL/CUL AWG	4
UL/CUL AWG	22
UL/CUL AWG	4

&

(YES or NO)	YES
가 (YES or NO)	YES
	120
	-40

### UL

(Group B)(AWG)	22~4
(Group B)(V)	600
(Group B)(A)	85
(Group C)(AWG)	22~4
(Group C)(V)	600
(Group C)(A)	85

### CUL

(Group B)(AWG)	22~4
(Group B)(V)	600
(Group B)(A)	85
(Group C)(AWG)	22~4
(Group C)(V)	600
(Group C)(A)	85

--	--

