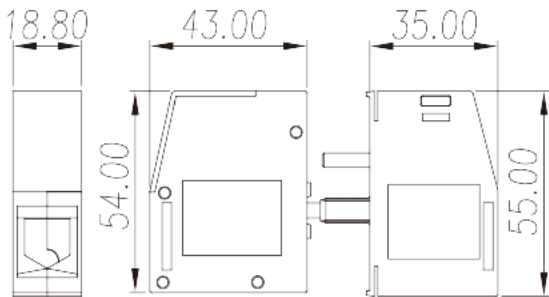
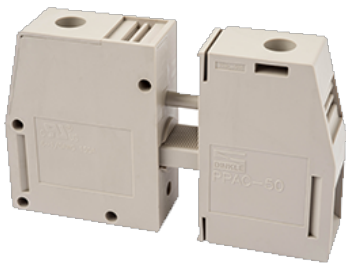


PPAC-50

PCB >

:2026-02-09

:1.2



M6, 600V, 150A

	Panel Feed-Through, Screw Connection
	Panel Feed-Through
	Grey (default)
	Screw connection
	Without
(mm)	18.8
(mm)	43+35
(mm)	55
()	1P
	PA
	I
UL 94	V0
	500M at DC 500V
	COPPER ALLOY
	Tin PLATED

-IEC

(V)	800 (1.0 ~ 2.5mm mounting plate and plastic mounting plate), 630 (2.5 ~ 6.0mm mounting plate)
(A)	150
(III/3)(V)	800 (1.0 ~ 2.5mm mounting plate and plastic mounting plate), 630 (2.5 ~ 6.0mm mounting plate)
(III/3)(KV)	8
(mm ²)	16
(mm ²)	50
(mm ²)	16
(mm ²)	50
	M6
Philips	#5
(N.m)	6
(N.m)	2.5
(N.m)	5.9
	22~23

-UL

(UL/CUL Group B)(V)	600
(UL/CUL Group B)(A)	150
(UL/CUL Group C)(V)	600
(UL/CUL Group C)(A)	150
(UL/CUL Group D)(V)	600
(UL/CUL Group D)(A)	5
UL/CUL AWG	6
UL/CUL AWG	1/0
UL/CUL AWG	6
UL/CUL AWG	1/0

&

(YES or NO)	YES
가 (YES or NO)	YES
	120
	-40

UL

(Group B) (AWG)	1/0~6
(Group B) (V)	600
(Group B) (A)	150
(Group C) (AWG)	1/0~6
(Group C) (V)	600
(Group C) (A)	150
(Group D) (AWG)	1/0~6
(Group D) (V)	600
(Group D) (A)	5

CUL

(Group B) (AWG)	6~1/0
(Group B) (V)	600
(Group B) (A)	150
(Group C) (AWG)	6~1/0
(Group C) (V)	600
(Group C) (A)	150
(Group D) (AWG)	6~1/0
(Group D) (V)	600
(Group D) (A)	5

VDE

(mm ²)	16~50
(V)	800
(A)	150

--	--

