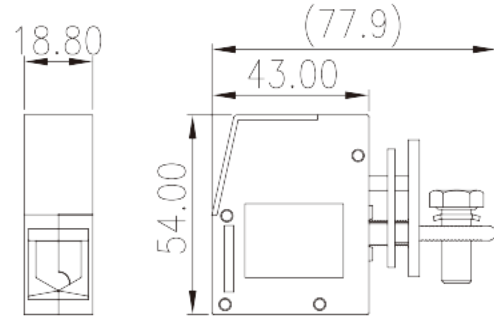
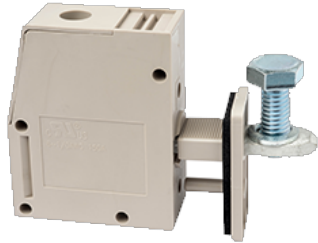


PPAC-50AS

PCB >

:2026-07-04 :1.2



M6, 300V, 150A

	Panel Feed-Through, Screw Connection
	Panel Feed-Through
	Grey (default)
	Screw connection
	Without
(mm)	18.8
(mm)	77.9
(mm)	54
()	1P
	PA
	I
UL 94	V0
	500M at DC 500V
	COPPER ALLOY
	Tin PLATED

-IEC

(V)	690
(A)	150
(III/3)(V)	690
(III/3)(KV)	8
(mm ²)	16
(mm ²)	50
(mm ²)	16
(mm ²)	50
	M6
Philips	#5
(N.m)	6
(N.m)	2.5
(N.m)	5.9
	22~23

-UL

(UL/CUL Group B)(V)	300
(UL/CUL Group B)(A)	150
(UL/CUL Group C)(V)	300
(UL/CUL Group C)(A)	150
(UL/CUL Group D)(V)	600
(UL/CUL Group D)(A)	5
UL/CUL AWG	6
UL/CUL AWG	1/0
UL/CUL AWG	6
UL/CUL AWG	1/0

&

(YES or NO)	YES
가 (YES or NO)	YES
	120
	-40

UL



(Group B)(AWG)	1/0~6
(Group B)(V)	300
(Group B)(A)	150
(Group C)(AWG)	1/0~6
(Group C)(V)	300
(Group C)(A)	150
(Group D)(AWG)	1/0~6
(Group D)(V)	600
(Group D)(A)	5

CUL

(Group B)(AWG)	6~1/0
(Group B)(V)	300
(Group B)(A)	150
(Group C)(AWG)	6~1/0
(Group C)(V)	300
(Group C)(A)	150
(Group D)(AWG)	6~1/0
(Group D)(V)	600
(Group D)(A)	5

VDE

(mm ²)	16~50
(V)	400
(A)	150

--	--

