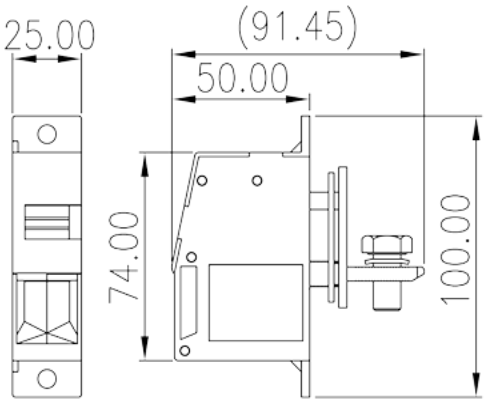
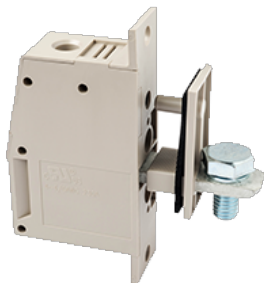


# PPAC-95MAS

PCB >

:2026-02-09

:1.2



M8, 300V, 230A

	Panel Feed-Through, Screw Connection
	Panel Feed-Through
	Grey (default)
	Screw connection
	With mounting flange
(mm)	25
(mm)	50+45
(mm)	100
( )	1P
	PA
	I
UL 94	V0
	500M at DC 500V
	COPPER ALLOY
	Tin PLATED

## -IEC

(V)	500V (5.0 ~ 6.0mm mounting plate), 630V (1.0 ~ 5.0mm mounting plate and plastic mounting plate)
(A)	232
(III/3)(V)	500V (5.0 ~ 6.0mm mounting plate), 630V (1.0 ~ 5.0mm mounting plate and plastic mounting plate)
(III/3)(KV)	8
(mm <sup>2</sup> )	25
(mm <sup>2</sup> )	95
(mm <sup>2</sup> )	25
(mm <sup>2</sup> )	95
(mm <sup>2</sup> ) ,	25
(mm <sup>2</sup> ) ,	95
(mm <sup>2</sup> ) ,	25
(mm <sup>2</sup> ) ,	95
2 (mm <sup>2</sup> )	25
2 (mm <sup>2</sup> )	35
2 (mm <sup>2</sup> )	25
2 (mm <sup>2</sup> )	35
2 (mm <sup>2</sup> ) ,	16
2 (mm <sup>2</sup> ) ,	35
	M8
Philips	#6
(N.m)	14.7
	26~27

## -UL

(UL/CUL Group B)(V)	300
(UL/CUL Group B)(A)	230
(UL/CUL Group C)(V)	300
(UL/CUL Group C)(A)	230
UL/CUL AWG	4

UL/CUL	AWG	4/0
UL/CUL	AWG	4
UL/CUL	AWG	4/0

&amp;

(YES or NO)	YES
가 (YES or NO)	YES
	120
	-40

## UL

(Group B) (AWG)	4~4/0
(Group B) (V)	300
(Group B) (A)	230
(Group C) (AWG)	4~4/0
(Group C) (V)	300
(Group C) (A)	230
(Group D) (AWG)	4~4/0
(Group D) (V)	600
(Group D) (A)	5

## CUL

(Group B) (AWG)	4~4/0
(Group B) (V)	300
(Group B) (A)	230
(Group C) (AWG)	4~4/0
(Group C) (V)	300
(Group C) (A)	230
(Group D) (AWG)	4~4/0
(Group D) (V)	600
(Group D) (A)	5

## VDE

(mm <sup>2</sup> )	25~95
(V)	500V (5.0 ~ 6.0mm mounting plate), 630V (1.0 ~ 5.0mm mounting plate and plastic mounting plate)

(A)

232

