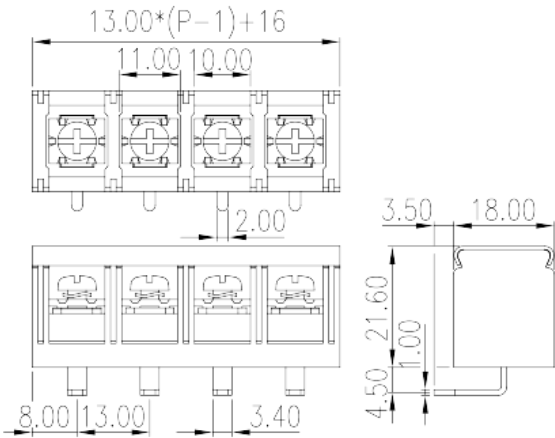
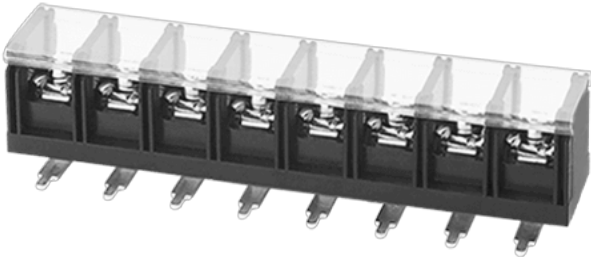


DT-7C-B18W-XX

>

:2025-12-25 :1.1



Pitch: 13.00mm , M4, 600V, 40A

	Barrier terminal blocks, Screw connection
	Single Row
(mm)	13.00
	Black (default)
	Screw connection
	Without
	Wave Soldering
(mm)	13.00*(P-1)+16
(mm)	18
(mm)	26.6
(x) (mm)	1.0x2.0
PCB (mm)	2.7
()	02P~14P
	Single Row
	2~14
	PBT



	IIIa
UL 94	V0
	1000M at DC 500V
	COPPER ALLOY
	Tin PLATED

-IEC

(V)	1000
(A)	41
(II/2)(V)	1000
(III/2)(V)	1000
(III/3)(V)	500
(II/2)(KV)	8
(III/2)(KV)	8
(III/3)(KV)	8
(mm ²)	0.5
(mm ²)	6
(mm ²)	0.5
(mm ²)	6
2 (mm ²)	0.5
2 (mm ²)	6
2 (mm ²)	0.5
2 (mm ²)	6
	M4
Width)(mm) (Blade thickness x	1.0x5.5
Philips	PH2
(N.m)	1.6
(N.m)	1.2
(N.m)	1.5
	11~12

-UL

(UL/CUL Group B)(V)	600
(UL/CUL Group B)(A)	40

(UL/CUL Group C)(V)	600
(UL/CUL Group C)(A)	40
(UL/CUL Group D)(V)	600
(UL/CUL Group D)(A)	5
UL/CUL AWG	18
UL/CUL AWG	8
UL/CUL AWG	18
UL/CUL AWG	8

&

(YES or NO)	YES
	120
	-40

UL

(Group B)(AWG)	18~8
(Group B)(V)	600
(Group B)(A)	40
(Group C)(AWG)	18~8
(Group C)(V)	600
(Group C)(A)	40
(Group D)(AWG)	18~8
(Group D)(V)	600
(Group D)(A)	5

CUL

(Group B)(AWG)	18~8
(Group B)(V)	600
(Group B)(A)	40
(Group C)(AWG)	18~8
(Group C)(V)	600
(Group C)(A)	40
(Group D)(AWG)	18~8
(Group D)(V)	600
(Group D)(A)	5

VDE

(mm ²)	0.5~6
(V)	1000
(A)	41

