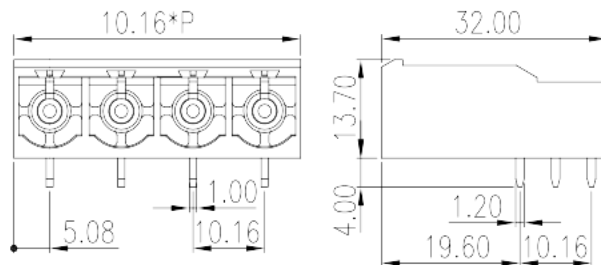


# ECH116R-XXP

PCB > PCB -

:2026-07-05 :V1



Pitch : 10.16mm, 300V, 51A

	PCB Connector – Socket, Wave soldering
	PCB Connector – Socket
(mm)	10.16
	Green (default)
	Without
	Wave soldering
(mm)	10.16*(P-1) + 10.16
(mm)	32
(mm)	13.7
(    x    ) (mm)	1.0x1.2
PCB (mm)	1.75~1.85
(    )	02P~10P
	Single level
	PA
	I
UL 94	V0



	500M at DC 500V
	COPPER ALLOY
	Ag PLATED

**-IEC**

(V)	1000
(A)	76
(II/2)(V)	1000
(III/2)(V)	1000
(III/3)(V)	630
(II/2)(KV)	8
(III/2)(KV)	8
(III/3)(KV)	8

**-UL**

(UL/CUL Group B)(V)	300
(UL/CUL Group B)(A)	51
(UL/CUL Group D)(V)	600
(UL/CUL Group D)(A)	5

**&**

가 (YES or NO)	YES
	120
	-40

**UL**

(Group B)(V)	300
(Group B)(A)	5
(Group D)(V)	600
(Group D)(A)	5

**CUL**

(Group B)(V)	300
(Group B)(A)	5
(Group D)(V)	600

(Group D)(A)

5

VDE

(V)

1000

(A)

76

