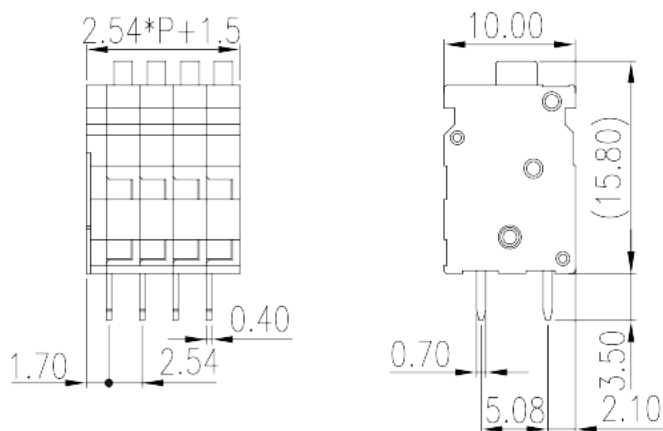
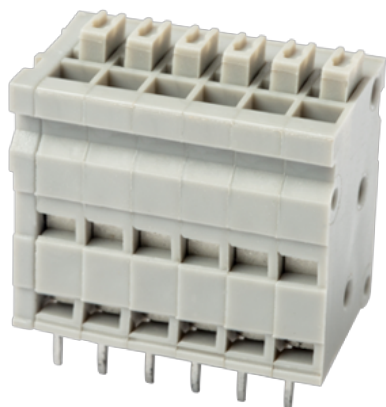


# 0138-10XX

PCB > PCB

:2026-05-14 :V1



Pitch : 2.54mm, 150V, 5A

		PCB Terminal Blocks, Push-in Design
		PCB Terminal Blocks
(mm)		2.54
		Grey (default)
		Push in design
		Without
		Wave soldering
(mm)		$2.54 * (P-1) + 4.04$
(mm)		10
(mm)		15.8
( ) x ( ) (mm)		0.4x0.7
PCB (mm)		1~1.1
( )		02P~24P
		Single level
		PA
		I



UL 94	V0
	500M at DC 500V
	COPPER ALLOY
	Tin PLATED

**-IEC**

(V)	160
(A)	6
(II/2)(V)	320
(III/2)(V)	160
(III/3)(V)	160
(II/2)(KV)	2.5
(III/2)(KV)	2.5
(III/3)(KV)	2.5
(mm <sup>2</sup> )	0.2
(mm <sup>2</sup> )	0.5
(mm <sup>2</sup> )	0.2
(mm <sup>2</sup> )	0.5
(mm <sup>2</sup> ) , ,	0.25
(mm <sup>2</sup> ) , ,	0.34
(mm <sup>2</sup> ) , ,	0.25
(mm <sup>2</sup> ) , ,	0.34
Width)(mm) (Blade thickness x	0.4x2.5
	8~9

**-UL**

(UL/CUL Group B)(V)	150
(UL/CUL Group B)(A)	5
(UL/CUL Group D)(V)	150
(UL/CUL Group D)(A)	5
UL/CUL AWG	28
UL/CUL AWG	20



UL/CUL	AWG	28
UL/CUL	AWG	20

&

가	(YES or NO)	YES
		120
		-40

### UL

(Group B)(AWG)		28~20
(Group B)(V)		150
(Group B)(A)		5
(Group D)(AWG)		28~20
(Group D)(V)		150
(Group D)(A)		5

### CUL

(Group B)(AWG)		28~20
(Group B)(V)		150
(Group B)(A)		5
(Group D)(AWG)		28~20
(Group D)(V)		150
(Group D)(A)		5

### VDE

(mm <sup>2</sup> )		0.2~0.5
(V)		160
(A)		6

