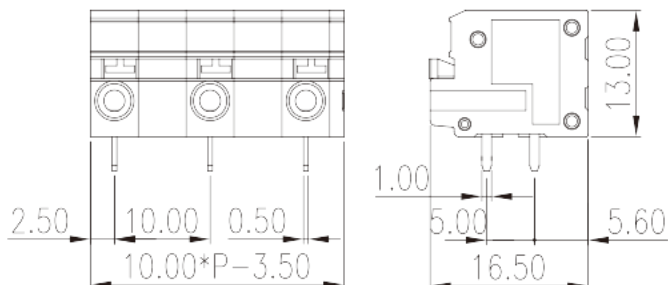
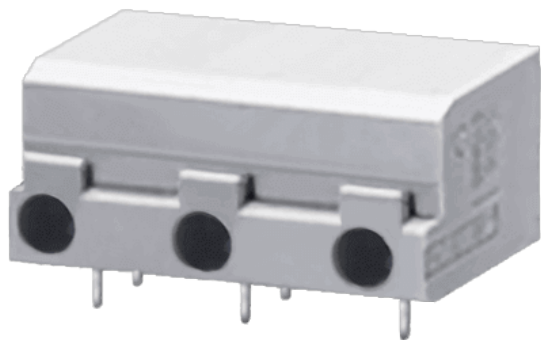


0138-78XX

PCB > PCB

:2026-07-05 :V1



Pitch : 10.00mm, 300V, 10A

		PCB Terminal Blocks, Push-in Design
		PCB Terminal Blocks
(mm)		10
		Grey (default)
		Push in design
		Without
		Reflow soldering
(mm)		10.00*(P-1)-3.50
(mm)		13
(mm)		16.5
() x () (mm)		0.5x1.0
PCB (mm)		1.3
()		02~24
		Single level
		PA
		I



UL 94	V0
	500M at DC 500V
	COPPER ALLOY
	Tin PLATED

-IEC

(V)	320
(A)	17.5
(II/2)(V)	1000
(III/2)(V)	1000
(III/3)(V)	630
(II/2)(KV)	8
(III/2)(KV)	8
(III/3)(KV)	8
(mm ²)	0.2
(mm ²)	1.5
(mm ²)	0.2
(mm ²)	1.5
(mm ²) , ,	0.25
(mm ²) , ,	1
(mm ²) , ,	0.25
(mm ²) , ,	1
	10

-UL

(UL/CUL Group B)(V)	300
(UL/CUL Group B)(A)	10
(UL/CUL Group C)(V)	300
(UL/CUL Group C)(A)	10
(UL/CUL Group D)(V)	600
(UL/CUL Group D)(A)	5
UL/CUL AWG	26
UL/CUL AWG	14



UL/CUL	AWG	18
UL/CUL	AWG	16

&

가	(YES or NO)	YES
		120
		-40

UL

(Group B)(AWG)		26~14
(Group B)(V)		300
(Group B)(A)		10
(Group C)(AWG)		26~14
(Group C)(V)		300
(Group C)(A)		10
(Group D)(AWG)		26~14
(Group D)(V)		600
(Group D)(A)		5

CUL

(Group B)(AWG)		26~14
(Group B)(V)		300
(Group B)(A)		10
(Group C)(AWG)		26~14
(Group C)(V)		300
(Group C)(A)		10
(Group D)(AWG)		26~14
(Group D)(V)		600
(Group D)(A)		5

--	--	--

