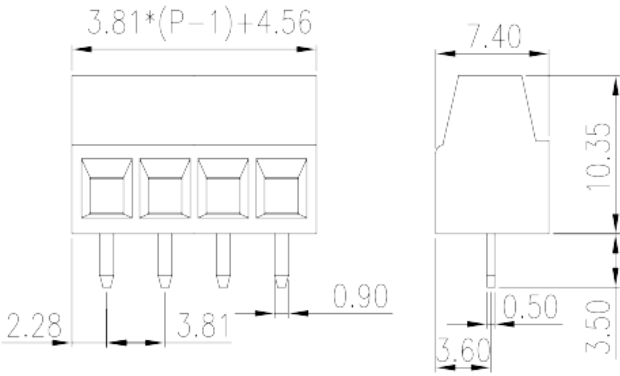
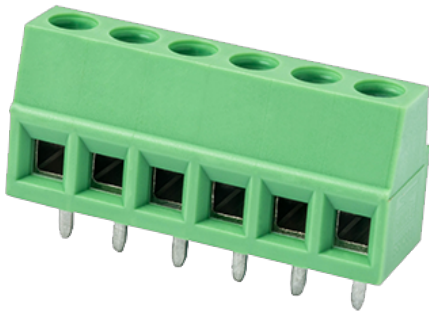


ESK381V-XXP

PCB > PCB

:2026-02-09 :1.1



Pitch : 3.81mm, 300V, 15A

	PCB Terminal Blocks, Screw Connection
	PCB Terminal Blocks
(mm)	3.81
	Green (default)
	Screw Connection
	Without
	Wave Soldering
(mm)	7.4
(mm)	$3.81 \times (P-1) + 4.56$
(mm)	10.4
(x) (mm)	0.5x0.9
PCB (mm)	1.3
()	02P~24P
	Single level
	PA
	I



UL 94	V0
	500M at DC 500V
	COPPER ALLOY
	Tin PLATED

-IEC

(V)	250
(A)	12
(II/2)(V)	320
(III/2)(V)	250
(III/3)(V)	160
(II/2)(KV)	2.5
(III/2)(KV)	2.5
(III/3)(KV)	2.5
(mm ²)	0.2
(mm ²)	1.5
(mm ²)	0.2
(mm ²)	1.5
(mm ²) , ,	0.25
(mm ²) , ,	1
(mm ²) , ,	0.25
(mm ²) , ,	1
2 (mm ²)	0.2
2 (mm ²)	0.75
2 (mm ²)	0.2
2 (mm ²)	1
(mm ²) ² , ,	0.25
(mm ²) ² , ,	0.75
(mm ²) ² , ,	0.5
(mm ²) ² , ,	0.75

	M2
Width) (mm) (Blade thickness x	0.4x2.5
(N.m)	0.2
(N.m)	0.25
	5~6

-UL

(UL/CUL Group B) (V)	300
(UL/CUL Group B) (A)	15
(UL/CUL Group D) (V)	300
(UL/CUL Group D) (A)	10
UL/CUL AWG	30
UL/CUL AWG	14
UL/CUL AWG	30
UL/CUL AWG	14

&

가 (YES or NO)	YES
	120
	-40

UL

(Group B) (AWG)	30~14
(Group B) (V)	300
(Group B) (A)	15
(Group D) (AWG)	30~14
(Group D) (V)	300
(Group D) (A)	10

CUL

(Group B) (AWG)	30~14
(Group B) (V)	300
(Group B) (A)	15
(Group D) (AWG)	30~14

(Group D) (V)	300
(Group D) (A)	10

