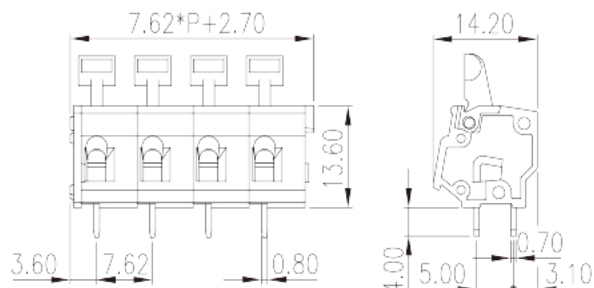
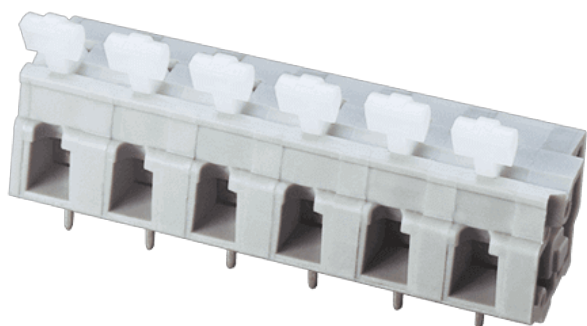


# WKR762A-XXP

PCB > PCB

:2026-07-05 :V1



Pitch : 7.62mm, 300V, 15A

	PCB Terminal Blocks, Spring clamp connection
	PCB Terminal Blocks
(mm)	7.62
	Grey (default)
	Spring clamp connection
	Without
(mm)	7.62*P+2.70
(mm)	14.2
(mm)	13.6
(    x    ) (mm)	0.7x0.8
PCB        (mm)	1.2~1.3
(    )	02P~30P
	Single level
	PA
	I
UL 94	V0



	500M at DC 500V
	COPPER ALLOY
	Tin PLATED

**-IEC**

(V)	450
(A)	24
(II/2)(V)	1000
(III/2)(V)	630
(III/3)(V)	500
(II/2)(KV)	6
(III/2)(KV)	6
(III/3)(KV)	6
(mm <sup>2</sup> )	0.5
(mm <sup>2</sup> )	2.5
(mm <sup>2</sup> )	0.5
(mm <sup>2</sup> )	2.5
(mm <sup>2</sup> ) , ,	0.25
(mm <sup>2</sup> ) , ,	1.5
(mm <sup>2</sup> ) , ,	0.25
(mm <sup>2</sup> ) , ,	1.5
	5~6

**-UL**

(UL/CUL Group B)(V)	300
(UL/CUL Group B)(A)	15
(UL/CUL Group C)(V)	150
(UL/CUL Group C)(A)	15
(UL/CUL Group D)(V)	300
(UL/CUL Group D)(A)	10
UL/CUL AWG	28
UL/CUL AWG	12
UL/CUL AWG	28



UL/CUL	AWG	12
<b>&amp;</b>		
가	(YES or NO)	YES
		120
		-40

**UL**

(Group B) (AWG)	28~12
(Group B) (V)	300
(Group B) (A)	15
(Group C) (AWG)	28~12
(Group C) (V)	150
(Group C) (A)	15
(Group D) (AWG)	28~12
(Group D) (V)	300
(Group D) (A)	10

**CUL**

(Group B) (AWG)	28~12
(Group B) (V)	300
(Group B) (A)	15
(Group C) (AWG)	28~12
(Group C) (V)	150
(Group C) (A)	15
(Group D) (AWG)	28~12
(Group D) (V)	150
(Group D) (A)	10

**VDE**

(mm <sup>2</sup> )	0.5~2.5
(V)	450
(A)	24

