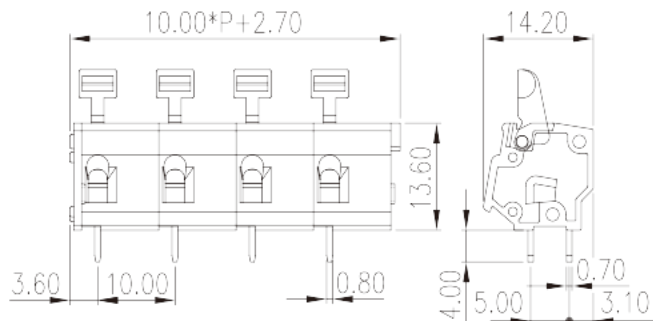
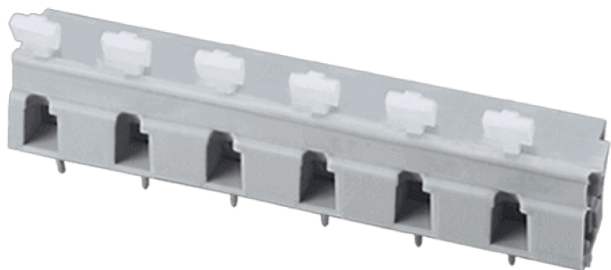


# WKR100A-XXP

PCB &gt; PCB

:2026-05-14 :V1



Pitch : 10.00mm, 300V, 15A

	PCB Terminal Blocks, Spring clamp connection
	PCB Terminal Blocks
(mm)	10
	Grey (default)
	Spring clamp connection
	Without
(mm)	10.00*P+2.70
(mm)	14.2
(mm)	13.6
(    x    ) (mm)	0.7x0.8
PCB      (mm)	1.20~1.30
(    )	02P~24P
	Single level
	PA
	I
UL 94	V0



	500M at DC 500V
	COPPER ALLOY
	Tin PLATED

**-IEC**

(V)	750
(A)	24
(II/2)(V)	1000
(III/2)(V)	1000
(III/3)(V)	630
(II/2)(KV)	8
(III/2)(KV)	8
(III/3)(KV)	8
(mm <sup>2</sup> )	0.5
(mm <sup>2</sup> )	2.5
(mm <sup>2</sup> )	0.5
(mm <sup>2</sup> )	2.5
(mm <sup>2</sup> ) , ,	0.25
(mm <sup>2</sup> ) , ,	1.5
(mm <sup>2</sup> ) , ,	0.25
(mm <sup>2</sup> ) , ,	1.5
	6~7

**-UL**

(UL/CUL Group B)(V)	300
(UL/CUL Group B)(A)	15
(UL/CUL Group C)(V)	300
(UL/CUL Group C)(A)	15
(UL/CUL Group D)(V)	600
(UL/CUL Group D)(A)	5
UL/CUL AWG	28
UL/CUL AWG	12
UL/CUL AWG	28



UL/CUL	AWG	12
<b>&amp;</b>		
가	(YES or NO)	YES
		120
		-40

**UL**

(Group B)(AWG)	28~12
(Group B)(V)	300
(Group B)(A)	15
(Group C)(AWG)	28~12
(Group C)(V)	300
(Group C)(A)	15
(Group D)(AWG)	28~12
(Group D)(V)	600
(Group D)(A)	5

**CUL**

(Group B)(AWG)	28~12
(Group B)(V)	300
(Group B)(A)	15
(Group C)(AWG)	28~12
(Group C)(V)	300
(Group C)(A)	15
(Group D)(AWG)	28~12
(Group D)(V)	600
(Group D)(A)	5

**VDE**

(mm <sup>2</sup> )	0.5~2.5
(V)	750
(A)	24

