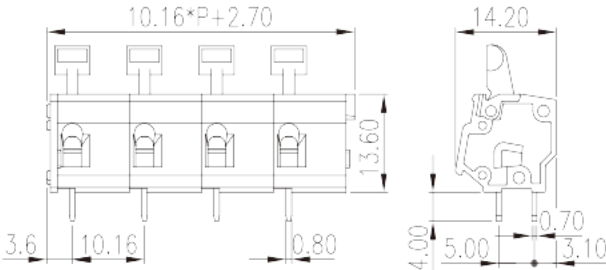
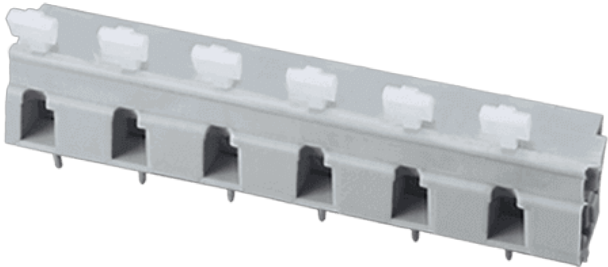


WKR116A-XXP

PCB > PCB

:2026-02-10 :V1



Pitch : 10.16mm, 300V, 15A

	PCB Terminal Blocks, Spring clamp connection
	PCB Terminal Blocks
(mm)	10.16
	Grey (default)
	Spring clamp connection
	Without
(mm)	10.16*P+2.70
(mm)	14.2
(mm)	13.6
(x) (mm)	0.7x0.8
PCB (mm)	1.2~1.3
()	02P~24P
	Single level
	PA
	I
UL 94	V0



	500M at DC 500V
	COPPER ALLOY
	Tin PLATED

-IEC

(V)	750
(A)	24
(II/2)(V)	1000
(III/2)(V)	1000
(III/3)(V)	630
(II/2)(KV)	8
(III/2)(KV)	8
(III/3)(KV)	8
(mm ²)	0.5
(mm ²)	2.5
(mm ²)	0.5
(mm ²)	2.5
(mm ²) , ,	0.25
(mm ²) , ,	1.5
(mm ²) , ,	0.25
(mm ²) , ,	1.5
	6~7

-UL

(UL/CUL Group B)(V)	300
(UL/CUL Group B)(A)	15
(UL/CUL Group C)(V)	300
(UL/CUL Group C)(A)	15
(UL/CUL Group D)(V)	600
(UL/CUL Group D)(A)	5
UL/CUL AWG	28
UL/CUL AWG	12
UL/CUL AWG	28

UL/CUL	AWG	12
&		
가	(YES or NO)	YES
		120
		-40

UL

(Group B) (AWG)	28~12
(Group B) (V)	300
(Group B) (A)	15
(Group C) (AWG)	28~12
(Group C) (V)	300
(Group C) (A)	15
(Group D) (AWG)	28~12
(Group D) (V)	600
(Group D) (A)	5

CUL

(Group B) (AWG)	28~12
(Group B) (V)	300
(Group B) (A)	15
(Group C) (AWG)	28~12
(Group C) (V)	300
(Group C) (A)	15
(Group D) (AWG)	28~12
(Group D) (V)	600
(Group D) (A)	5

VDE

(mm ²)	0.5~2.5
(V)	750
(A)	24

