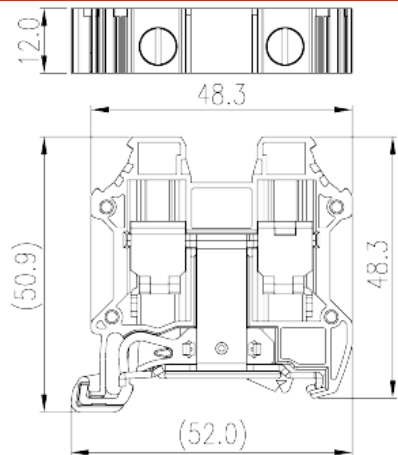
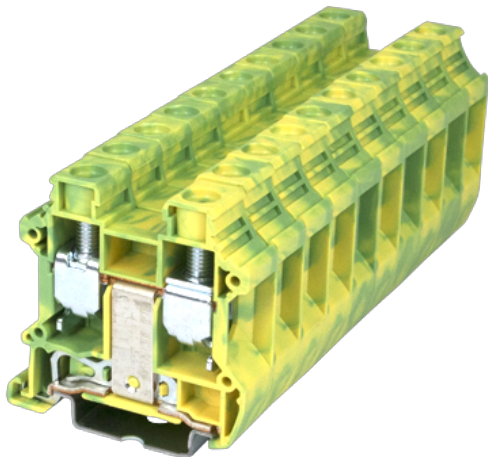


# DK16N-PE

DIN Rail Terminal Blocks > Screw Connection

Date:2025-08-02Version:1.2



The web catalog is for reference only. Dinkle remains the right of product modification and engineering change of the design.  
The final product is made according to engineering drawing.

## Product Description

M5, Green-Yellow (default)

## General information

|                     |                                            |
|---------------------|--------------------------------------------|
| Short description   | Grounding Terminal Block, Screw Connection |
| Category            | Grounding Terminal Block                   |
| Color               | Green-Yellow (default)                     |
| Connection method   | Screw connection                           |
| Type of locking     | Rail mounting                              |
| Length (mm)         | 52                                         |
| Width (mm)          | 12                                         |
| Height (mm)         | 50.9                                       |
| Number of positions | □1P                                        |
| Level               | Single level                               |
| Connection points   | 2                                          |

## Material information

|                                              |    |
|----------------------------------------------|----|
| Insulation material                          | PA |
| Insulation material group                    | I  |
| Flame retardant rating , compliant with UL94 | V0 |

Insulation resistance

 $\geq 500M\Omega$  at DC 500V

## Connection data-IEC

|                                                                                                           |                 |
|-----------------------------------------------------------------------------------------------------------|-----------------|
| Rated voltage (V)                                                                                         | 1000            |
| Rated voltage (III/3)(V)                                                                                  | 1000            |
| Rated impulse voltage (III/3)(KV)                                                                         | 8               |
| Conductor cross section solid. min (mm <sup>2</sup> )                                                     | 1.5             |
| Conductor cross section solid.max (mm <sup>2</sup> )                                                      | 25              |
| Conductor cross section stranded. min (mm <sup>2</sup> )                                                  | 1.5             |
| Conductor cross section stranded. max (mm <sup>2</sup> )                                                  | 16              |
| Conductor cross section flexible, with min ferrule without plastic sleeve (mm <sup>2</sup> )              | 1.5             |
| Conductor cross section flexible, with max ferrule without plastic sleeve (mm <sup>2</sup> )              | 16              |
| Conductor cross section flexible, with min ferrule with plastic sleeve (mm <sup>2</sup> )                 | 1.5             |
| Conductor cross section flexible, with max ferrule with plastic sleeve (mm <sup>2</sup> )                 | 16              |
| 2 conductors with same cross section, solid, min (mm <sup>2</sup> )                                       | 1.5             |
| 2 conductors with same cross section, solid, max (mm <sup>2</sup> )                                       | 6               |
| 2 conductors with same cross section, stranded, min (mm <sup>2</sup> )                                    | 1.5             |
| 2 conductors with same cross section, stranded, max (mm <sup>2</sup> )                                    | 6               |
| 2 conductors with same cross section flexible, with min ferrule without plastic sleeve (mm <sup>2</sup> ) | 1.5             |
| 2 conductors with same cross section flexible, with max ferrule without plastic sleeve (mm <sup>2</sup> ) | 6               |
| 2 conductors with same cross section flexible, min twin ferrules with plastic sleeve (mm <sup>2</sup> )   | 1.5             |
| 2 conductors with same cross section flexible, max twin ferrules with plastic sleeve (mm <sup>2</sup> )   | 10              |
| Screw thread                                                                                              | M5              |
| Slotted screwdriver size (Blade thickness x Width)(mm)                                                    | 0.8x4.0         |
| Rated torque (N.m)                                                                                        | 2.5             |
| Stripping Length (mm)                                                                                     | 12~14           |
| Mounting rail                                                                                             | TS-35 、TS-35/15 |
| End cover plate required                                                                                  | YES             |
| Grounding connections                                                                                     | YES             |

## Connection data-UL

|                                                  |     |
|--------------------------------------------------|-----|
| Rated voltage (UL/CUL Group B)(V)                | 600 |
| Rated voltage (UL/CUL Group C)(V)                | 600 |
| Min. solid wire connection (AWG) acc. to UL/CUL  | 14  |
| Max. solid wire connection AWG acc. to UL/CUL    | 3   |
| Min. stranded wire connection AWG acc. to UL/CUL | 14  |
| Max. stranded wire connection AWG acc. to UL/CUL | 3   |

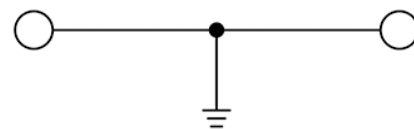
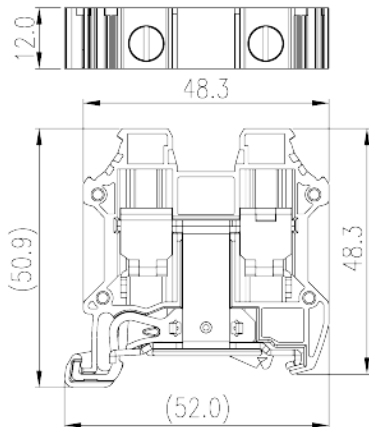
## Environment & Safety

|                                         |     |
|-----------------------------------------|-----|
| Back of the hand protection (YES or NO) | YES |
| Finger protection (YES or NO)           | YES |
| Operating temperature. max (°C)         | 120 |
| Operating temperature. min (°C)         | -40 |

## VDE Approval

|                               |        |
|-------------------------------|--------|
| Wire Range (mm <sup>2</sup> ) | 1.5~16 |
|-------------------------------|--------|

## Drawings



circuit diagram

## Approvals

