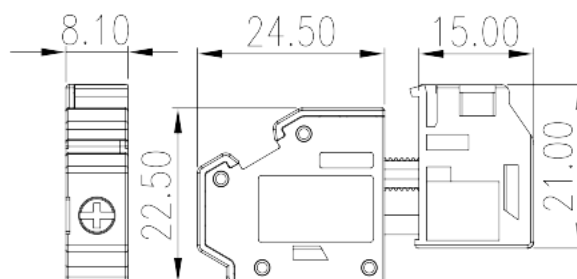
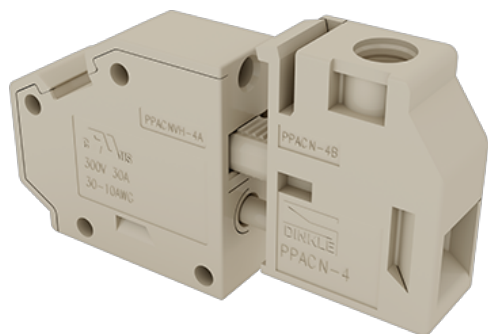


# PPACNVH-4

PCB Terminal Blocks > Panel Feed-Through Blocks

Date:2026-07-04



The web catalog is for reference only. Dinkle remains the right of product modification and engineering change of the design. The final product is made according to engineering drawing.

## Product Description

M3, 300V, 30A

## General information

|                     |                                      |
|---------------------|--------------------------------------|
| Short description   | Panel Feed-Through, Screw Connection |
| Category            | Panel Feed-Through                   |
| Color               | Grey (default)                       |
| Connection method   | Screw Connection                     |
| Type of locking     | Without                              |
| Length (mm)         | 8.1                                  |
| Width (mm)          | 24.5+15                              |
| Height (mm)         | 25.5                                 |
| Number of positions | 1P                                   |

## Material information

|  |                   |
|--|-------------------|
| Insulation material                          | PA                |
| Insulation material group                    | I                 |
| Flame retardant rating , compliant with UL94 | V0                |
| Insulation resistance                        | ≥500MΩ at DC 500V |
| Conductor material                           | COPPER ALLOY      |

Plating of conductor surface

Tin PLATED

## Connection data-IEC

|   |         |
|---|---------|
| Rated voltage (V)   | 400     |
| Rated current (A)   | 41      |
| Rated voltage (III/3)(V)  | 400     |
| Rated impulse voltage (III/3)(KV)   | 6       |
| Conductor cross section solid. min (mm <sup>2</sup> )   | 0.2     |
| Conductor cross section solid.max (mm <sup>2</sup> )  | 6       |
| Conductor cross section stranded. min (mm <sup>2</sup> )  | 0.2     |
| Conductor cross section stranded. max (mm <sup>2</sup> )  | 6       |
| Conductor cross section flexible, with min ferrule without plastic sleeve (mm <sup>2</sup> )              | 0.25    |
| Conductor cross section flexible, with max ferrule without plastic sleeve (mm <sup>2</sup> )              | 4       |
| Conductor cross section flexible, with min ferrule with plastic sleeve (mm <sup>2</sup> )                 | 0.25    |
| Conductor cross section flexible, with max ferrule with plastic sleeve (mm <sup>2</sup> )                 | 4       |
| 2 conductors with same cross section, solid, min (mm <sup>2</sup> )                                       | 0.2     |
| 2 conductors with same cross section, solid, max (mm <sup>2</sup> )                                       | 1.5     |
| 2 conductors with same cross section, stranded, min (mm <sup>2</sup> )                                    | 0.2     |
| 2 conductors with same cross section, stranded, max (mm <sup>2</sup> )                                    | 1.5     |
| 2 conductors with same cross section flexible, with min ferrule without plastic sleeve (mm <sup>2</sup> ) | 0.25    |
| 2 conductors with same cross section flexible, with max ferrule without plastic sleeve (mm <sup>2</sup> ) | 1.5     |
| 2 conductors with same cross section flexible, min twin ferrules with plastic sleeve (mm <sup>2</sup> )   | 0.5     |
| 2 conductors with same cross section flexible, max twin ferrules with plastic sleeve (mm <sup>2</sup> )   | 2.5     |
| Screw thread  | M3      |
| Slotted screwdriver size (Blade thickness x Width)(mm)  | 0.8*4.0 |
| Philips screwdriver size  | PH1     |
| Rated torque (N.m)  | 0.6     |
| Stripping Length (mm)   | 9       |

## Connection data-UL

|  |     |
|--|-----|
| Rated voltage (UL/CUL Group B)(V)                | 300 |
| Rated current (UL/CUL Group B)(A)                | 30  |
| Rated voltage (UL/CUL Group C)(V)                | 300 |
| Rated current (UL/CUL Group C)(A)                | 30  |
| Rated voltage (UL/CUL Group D)(V)                | 300 |
| Rated current (UL/CUL Group D)(A)                | 10  |
| Min. solid wire connection (AWG) acc. to UL/CUL  | 30  |
| Max. solid wire connection AWG acc. to UL/CUL    | 10  |
| Min. stranded wire connection AWG acc. to UL/CUL | 30  |
| Max. stranded wire connection AWG acc. to UL/CUL | 10  |

## Environment & Safety

|   |     |
|---|-----|
| Back of the hand protection (YES or NO) | YES |
| Finger protection (YES or NO)           | YES |
| Operating temperature. max (°C)         | 120 |
| Operating temperature. min (°C)         | -40 |

## UL Recognized

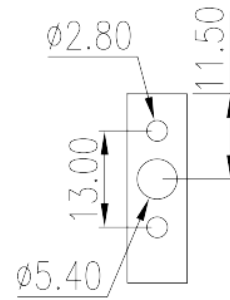
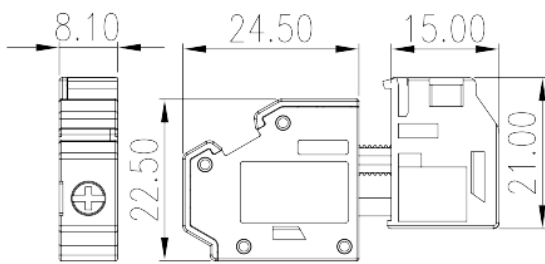
|                            |       |
|----------------------------|-------|
| Wire Range (Group B)(AWG)  | 30~10 |
| Rated voltage (Group B)(V) | 300   |
| Rated current (Group B)(A) | 30    |
| Wire Range (Group C)(AWG)  | 30~10 |
| Rated voltage (Group C)(V) | 300   |
| Rated current (Group C)(A) | 30    |
| Wire Range (Group D)(AWG)  | 30~10 |
| Rated voltage (Group D)(V) | 300   |
| Rated current (Group D)(A) | 10    |

## CUL Recognized

|                            |       |
|----------------------------|-------|
| Wire Range (Group B)(AWG)  | 30~10 |
| Rated voltage (Group B)(V) | 300   |
| Rated current (Group B)(A) | 30    |
| Wire Range (Group C)(AWG)  | 30~10 |
| Rated voltage (Group C)(V) | 300   |
| Rated current (Group C)(A) | 30    |

|                            |       |
|----------------------------|-------|
| Wire Ranget (Group D)(AWG) | 30~10 |
| Rated voltage (Group D)(V) | 300   |
| Rated current (Group D)(A) | 10    |

## Drawings



## Approvals

