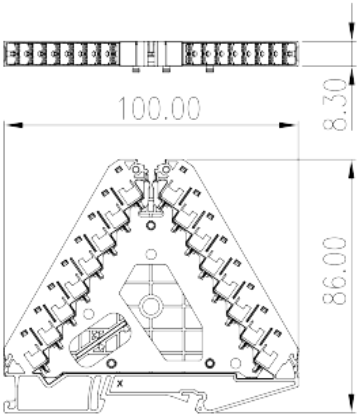
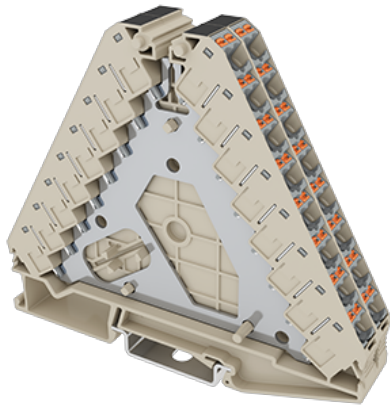


# DPD6-P002

DIN Rail Terminal Blocks > Push-in Design

Date:2025-09-17



The web catalog is for reference only. Dinkle remains the right of product modification and engineering change of the design.  
The final product is made according to engineering drawing.

## Product Description

### General information

Short description	Potential distributors Terminal Block, Push-in Design
Category	Potential distributors Terminal Block
Color	Beige (default)
Connection method	Push-in Design
Length (mm)	100
Width (mm)	8.3
Height (mm)	86
Level	Eight level
Connection points	32

### Material information

Insulation material	PA
Insulation material group	I
Flame retardant rating , compliant with UL94	V0
Insulation resistance	□500MΩ at DC 500V

## Connection data-IEC

Rated voltage (V)	250
Rated current (A)	17.5
Rated voltage (III/3)(V)	250
Rated impulse voltage (III/3)(KV)	4
Conductor cross section solid. min (mm <sup>2</sup> )	0.14
Conductor cross section solid.max (mm <sup>2</sup> )	2.5
Conductor cross section stranded. min (mm <sup>2</sup> )	0.14
Conductor cross section stranded. max (mm <sup>2</sup> )	2.5
Conductor cross section flexible, with min ferrule without plastic sleeve (mm <sup>2</sup> )	0.25
Conductor cross section flexible, with max ferrule without plastic sleeve (mm <sup>2</sup> )	1.5
Conductor cross section flexible, with min ferrule with plastic sleeve (mm <sup>2</sup> )	0.25
Conductor cross section flexible, with max ferrule with plastic sleeve (mm <sup>2</sup> )	1.5
Mounting rail	TS-35

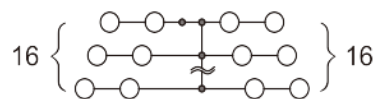
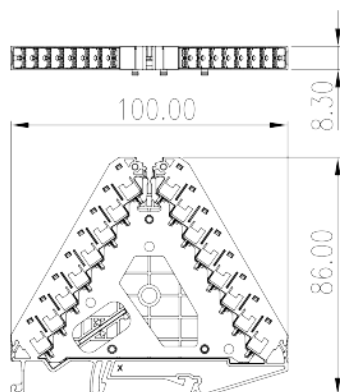
## UL Recognized

Wire Range (Group B)(AWG)	26-14
Rated voltage (Group B)(V)	300
Rated current (Group B)(A)	15
Wire Range (Group D)(AWG)	26-14
Rated voltage (Group D)(V)	300
Rated current (Group D)(A)	15

## CUL Recognized

Wire Range (Group B)(AWG)	26-14
Rated voltage (Group B)(V)	300
Rated current (Group B)(A)	15
Wire Ranget (Group D)(AWG)	26-14
Rated voltage (Group D)(V)	300
Rated current (Group D)(A)	15

## Drawings



## Approvals

