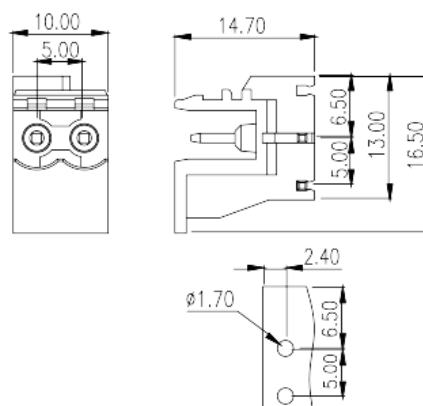


# 5EH-2PRL

PCB Terminal Blocks > PCB Connector-Socket

Date:2025-06-24



The web catalog is for reference only. Dinkle remains the right of product modification and engineering change of the design.  
The final product is made according to engineering drawing.

## Product Description

Pitch: 5.00mm, 300V, 15A

## General information

|  |  |
|--|--|
| Short description                      | PCB Connector – Socket, Reflow Soldering |
| Category                               | PCB Connector – Socket                   |
| Pitch (mm)                             | 5  |
| Color                                  | Black (default)                          |
| Type of locking                        | Without                                  |
| Soldering method                       | Reflow Soldering                         |
| Length (mm)                            | 10                                       |
| Width (mm)                             | 14.7                                     |
| Height (mm)                            | 16.5                                     |
| Pin demensions (Thickness x Width)(mm) | 1x1                                      |
| PCB hole diameter (mm)                 | 1.6                                      |
| Number of positions                    | 02P                                      |
| Level                                  | Single level                             |

## Material information

|                     |                           |
|---------------------|---------------------------|
| Insulation material | HIGH-TEMPERATURE PLASTICS |
|---------------------|---------------------------|

|  |                   |
|--|-------------------|
| Insulation material group                    | I                 |
| Flame retardant rating , compliant with UL94 | V0                |
| Insulation resistance                        | □500MΩ at DC 500V |
| Conductor material                           | COPPER ALLOY      |
| Plating of conductor surface                 | Tin PLATED        |
| MSL  | 2                 |

## Connection data-IEC

|                                   |     |
|-----------------------------------|-----|
| Rated voltage (V)                 | 630 |
| Rated current (A)                 | 18  |
| Rated voltage (II/2)(V)           | 630 |
| Rated voltage (III/2) (V)         | 320 |
| Rated voltage (III/3)(V)          | 320 |
| Rated impulse voltage (II/2)(KV)  | 4   |
| Rated impulse voltage (III/2)(KV) | 4   |
| Rated impulse voltage (III/3)(KV) | 4   |

## Connection data-UL

|                                   |     |
|-----------------------------------|-----|
| Rated voltage (UL/CUL Group B)(V) | 300 |
| Rated current (UL/CUL Group B)(A) | 15  |
| Rated voltage (UL/CUL Group D)(V) | 300 |
| Rated current (UL/CUL Group D)(A) | 10  |

## Environment & Safety

|                                 |     |
|---------------------------------|-----|
| Finger protection (YES or NO)   | YES |
| Operating temperature. max (°C) | 120 |
| Operating temperature. min (°C) | -40 |

## UL Recognized

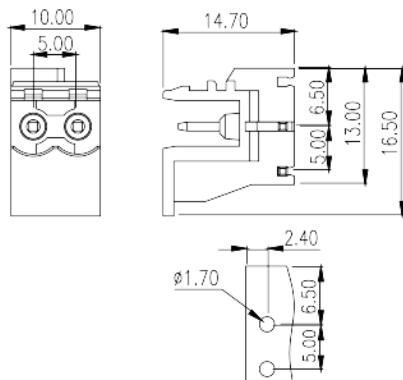
|                            |     |
|----------------------------|-----|
| Rated voltage (Group B)(V) | 300 |
| Rated current (Group B)(A) | 15  |
| Rated voltage (Group D)(V) | 300 |
| Rated current (Group D)(A) | 10  |

## CUL Recognized

|  |  |
|--|--|
|  |  |
|--|--|

|                            |     |
|----------------------------|-----|
| Rated voltage (Group B)(V) | 300 |
| Rated current (Group B)(A) | 15  |
| Rated voltage (Group D)(V) | 300 |
| Rated current (Group D)(A) | 10  |

## Drawings



## Approvals

