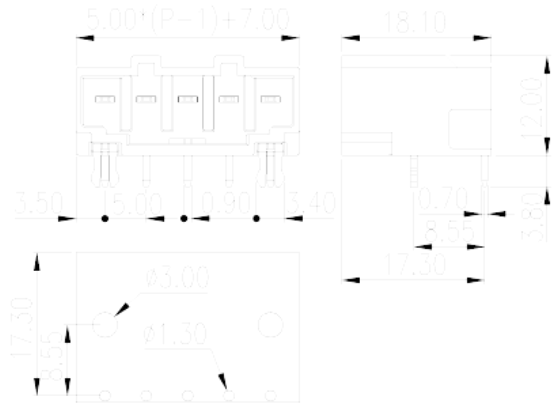
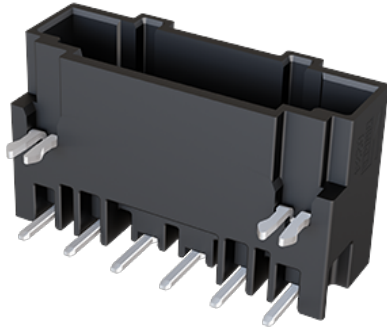


# 0234-26XX

PCB Terminal Blocks &gt; PCB Connector-Socket

Date:2025-06-24



The web catalog is for reference only. Dinkle remains the right of product modification and engineering change of the design.  
The final product is made according to engineering drawing.

## Product Description

Pitch : 5.00mm, 300V, 15.5A

## General information

Short description	PCB Connector
Category	PCB Connector – Socket
Pitch (mm)	5.00
Type of locking	With lock flange
Soldering method	Wave Soldering
Length (mm)	$5.00 \times (P-1) + 7$
Width (mm)	12
Height (mm)	18.1
Pin demensions (Thickness x Width)(mm)	0.7x0.9
Number of positions	02P~14P
Level	Single level

## Material information

Insulation material	PA
Insulation material group	I
Flame retardant rating , compliant with UL94	V0

Insulation resistance	□500MΩ at DC 500V
Conductor material	COPPER ALLOY
Plating of conductor surface	Au PLATED

## Connection data-IEC

Rated voltage (V)	300
Rated current (A)	18
Rated voltage (II/2)(V)	320
Rated voltage (III/2) (V)	320
Rated voltage (III/3)(V)	200
Rated impulse voltage (II/2)(KV)	4
Rated impulse voltage (III/2)(KV)	4
Rated impulse voltage (III/3)(KV)	4

## Connection data-UL

Rated voltage (UL/CUL Group B)(V)	300
Rated current (UL/CUL Group B)(A)	15.5
Rated voltage (UL/CUL Group D)(V)	300
Rated current (UL/CUL Group D)(A)	15.5

## Environment & Safety

Finger protection (YES or NO)	YES
Operating temperature. max (°C)	120
Operating temperature. min (°C)	-40

## UL Recognized

Rated voltage (Group B)(V)	300
Rated current (Group B)(A)	15.5
Rated voltage (Group D)(V)	300
Rated current (Group D)(A)	15.5

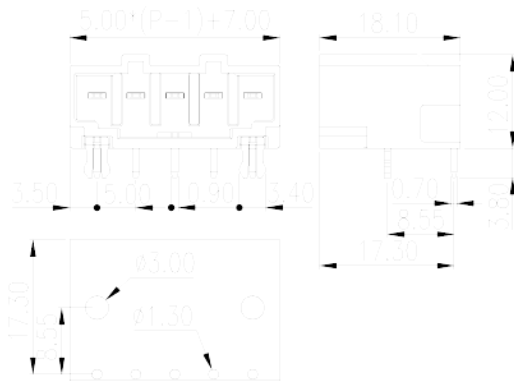
## CUL Recognized

Rated voltage (Group B)(V)	300
Rated current (Group B)(A)	15.5
Rated voltage (Group D)(V)	300

Rated current (Group D)(A)

15.5

## Drawings



## Approvals

