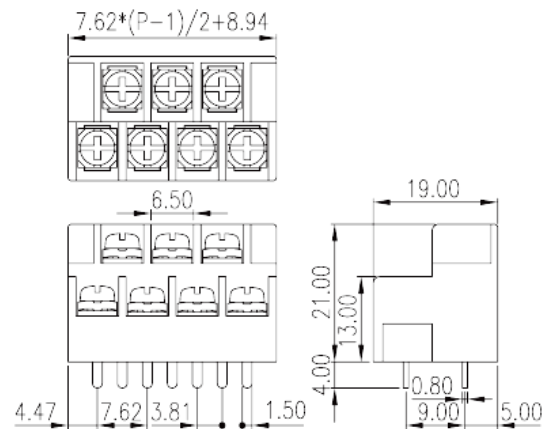
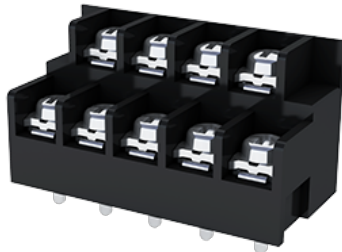


# 0032-23XX

Barrier Terminal Blocks &gt; Bi-level

Date:2026-01-31



The web catalog is for reference only. Dinkle remains the right of product modification and engineering change of the design.  
The final product is made according to engineering drawing.

## Product Description

Pitch: 7.62mm, M3, 300V, 20A

## General information

Short description	Bi-level, Screw Connection
Category	Bi-level
Pitch (mm)	7.62
Color	Black (default)
Connection method	Screw connection
Type of locking	Without
Soldering method	Wave Soldering
Length (mm)	$7.62 \times (P-1) / 2 + 8.94$
Width (mm)	19
Height (mm)	21
Pin dimensions (Thickness x Width)(mm)	0.8x1.5
PCB hole diameter (mm)	2.2
Number of positions	03P~23P
Level	Bi-level
Connection points	3~23

## Material information

Insulation material	PBT
Insulation material group	IIIa
Flame retardant rating , compliant with UL94	V0
Insulation resistance	□1000MΩ at DC 500V
Conductor material	COPPER ALLOY
Plating of conductor surface	Tin PLATED

## Connection data-IEC

Rated voltage (V)	320
Rated current (A)	24
Rated voltage (II/2)(V)	320
Rated voltage (III/2) (V)	320
Rated voltage (III/3)(V)	200
Rated impulse voltage (II/2)(KV)	4
Rated impulse voltage (III/2)(KV)	4
Rated impulse voltage (III/3)(KV)	4
Conductor cross section solid. min (mm²)	0.34
Conductor cross section solid.max (mm²)	2.5
Conductor cross section stranded. min (mm²)	0.34
Conductor cross section stranded. max (mm²)	2.5
2 conductors with same cross section, solid, min (mm²)	0.34
2 conductors with same cross section, solid, max (mm²)	2.5
2 conductors with same cross section, stranded, min (mm²)	0.34
2 conductors with same cross section, stranded, max (mm²)	2.5
Screw thread	M3
Slotted screwdriver size (Blade thickness x Width)(mm)	0.8x4
Philips screwdriver size	PH2
Recommend tightening torque. min (N.m)	0.5
Recommend tightening torque. max (N.m)	0.6
Stripping Length (mm)	8~9

## Connection data-UL

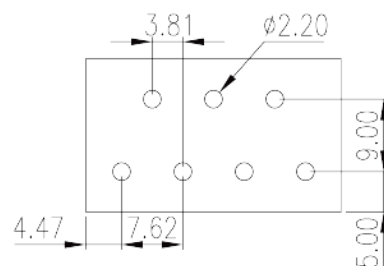
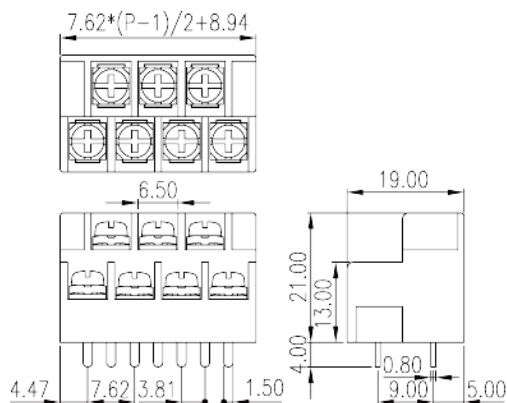
--	--

Rated voltage (UL/CUL Group B)(V)	300
Rated voltage (UL/CUL Group D)(V)	300
Rated current (UL/CUL Group D)(A)	10
Min. solid wire connection (AWG) acc. to UL/CUL	22
Max. solid wire connection AWG acc. to UL/CUL	12
Min. stranded wire connection AWG acc. to UL/CUL	22
Max. stranded wire connection AWG acc. to UL/CUL	12

## Environment & Safety

Back of the hand protection (YES or NO)	YES
Operating temperature. max (°C)	120
Operating temperature. min (°C)	-40

## Drawings



## Approvals

