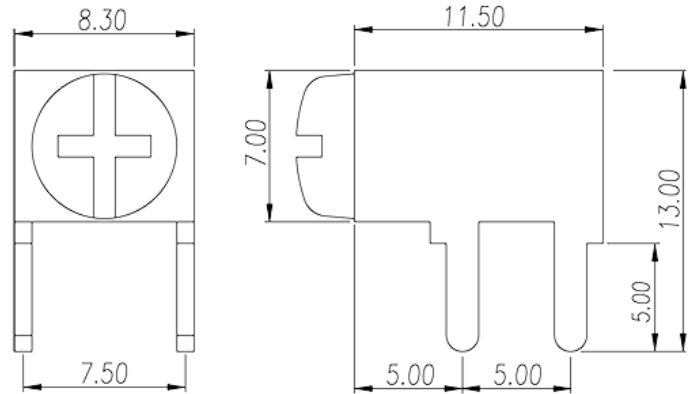
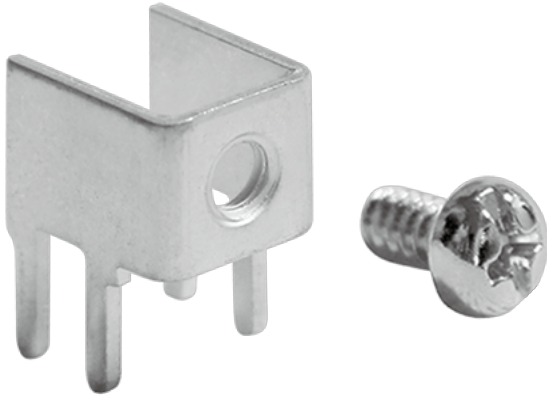


# P-810N

Barrier Terminal Blocks &gt; Wire Terminal

Date:2026-01-31Version:1.2



The web catalog is for reference only. Dinkle remains the right of product modification and engineering change of the design.  
The final product is made according to engineering drawing.

## Product Description

Pin size:0.8x1.5mm, 80A

## General information

|  |  |
|--|--|
| Short description                      | Barrier terminal blocks, Quick terminal blocks |
| Category                               | Quick terminal blocks                          |
| Pin demensions (Thickness x Width)(mm) | 0.8x1.5  |

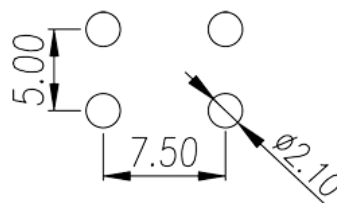
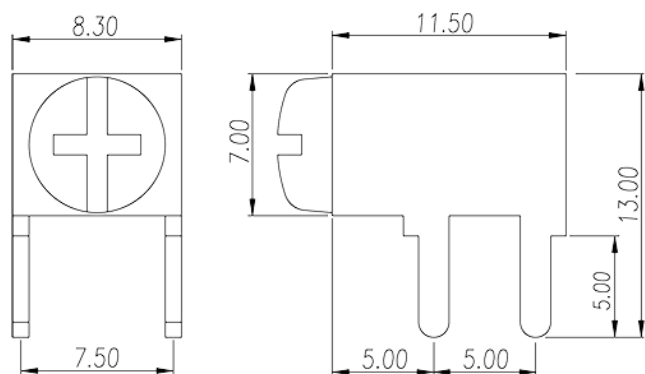
## Material information

|                              |              |
|------------------------------|--------------|
| Conductor material           | COPPER ALLOY |
| Plating of conductor surface | Tin PLATED   |

## Connection data-IEC

|  |         |
|--|---------|
| Rated current (A)                                      | 80      |
| Screw thread   | #6-32   |
| Slotted screwdriver size (Blade thickness x Width)(mm) | 0.8x4.0 |
| Philips screwdriver size                               | PH2     |
| Recommend tightening torque. min (N.m)                 | 0.8     |
| Recommend tightening torque. max (N.m)                 | 1       |

## Drawings



## Approvals

