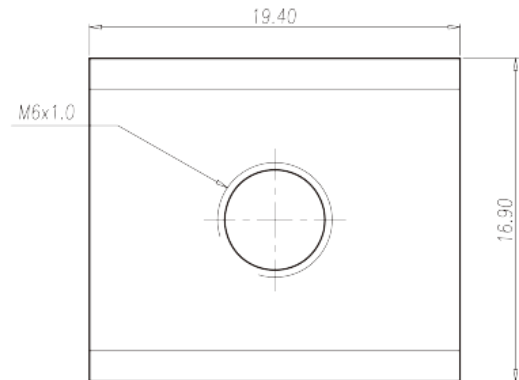


# P-840

Barrier Terminal Blocks &gt; Wire Terminal

Date:2026-01-31Version:1.2



The web catalog is for reference only. Dinkle remains the right of product modification and engineering change of the design.  
The final product is made according to engineering drawing.

## Product Description

Pitch : 15.30 / 15.40mm, 1.6x4.0mm, 150A

## General information

|  |  |
|--|--|
| Short description                      | Barrier terminal blocks, Quick terminal blocks |
| Category                               | Quick terminal blocks                          |
| Pitch (mm)                             | 15.30 / 15.40                                  |
| Pin demensions (Thickness x Width)(mm) | 1.6x4.0  |

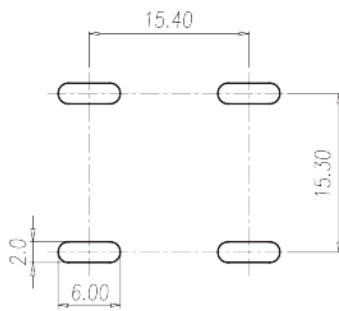
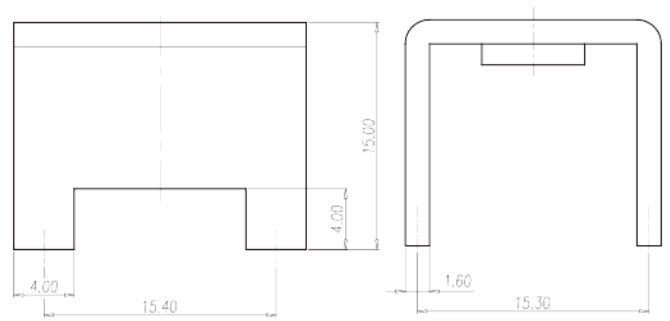
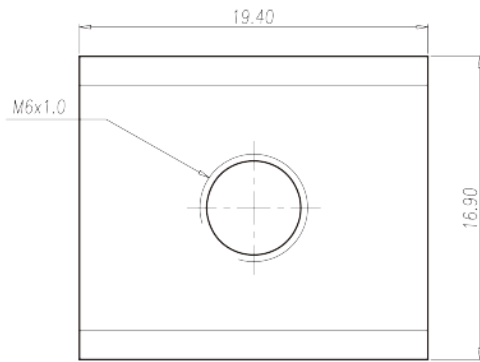
## Material information

|                              |              |
|------------------------------|--------------|
| Conductor material           | COPPER ALLOY |
| Plating of conductor surface | Tin PLATED   |

## Connection data-IEC

|                   |     |
|-------------------|-----|
| Rated current (A) | 150 |
| Screw thread      | M6  |

## Drawings



## Approvals

