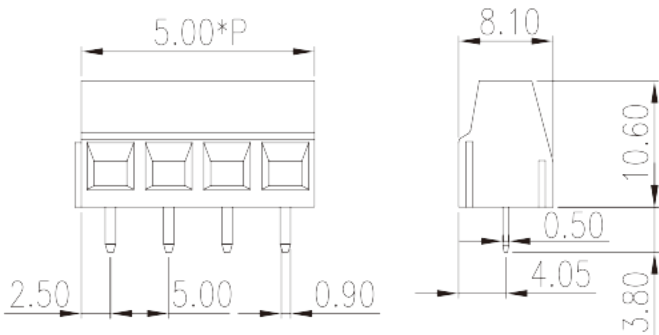
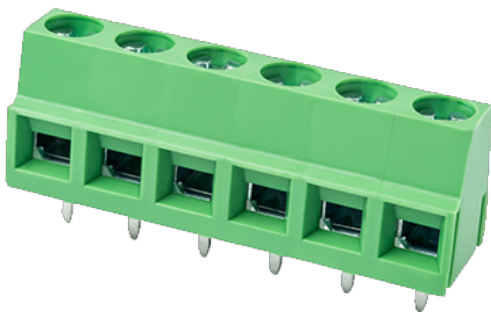


# ELK500V-XXP

PCB Terminal Blocks > PCB Terminal Blocks

Date:2025-12-19Version:V1



The web catalog is for reference only. Dinkle remains the right of product modification and engineering change of the design.  
The final product is made according to engineering drawing.

## Product Description

Pitch : 5.00mm, 300V, 13.5A

## General information

|  |                                       |
|--|---------------------------------------|
| Short description                      | PCB Terminal Blocks, Screw Connection |
| Category                               | PCB Terminal Blocks                   |
| Pitch (mm)                             | 5.00                                  |
| Color                                  | Green (default)                       |
| Connection method                      | Screw Connection                      |
| Type of locking                        | Without                               |
| Length (mm)                            | 5.00*P                                |
| Width (mm)                             | 8.1                                   |
| Height (mm)                            | 10.6                                  |
| Pin demensions (Thickness x Width)(mm) | 0.5x0.9                               |
| PCB hole diameter (mm)                 | 1.3                                   |
| Number of positions                    | 02P~24P                               |
| Level                                  | Single level                          |

## Material information

|                     |    |
|---------------------|----|
| Insulation material | PA |
|---------------------|----|

|  |                   |
|--|-------------------|
| Insulation material group                    | I                 |
| Flame retardant rating , compliant with UL94 | V0                |
| Insulation resistance                        | ≥500MΩ at DC 500V |
| Conductor material                           | COPPER ALLOY      |
| Plating of conductor surface                 | Tin PLATED        |

## Connection data-IEC

|   |         |
|---|---------|
| Rated voltage (V)   | 400     |
| Rated current (A)   | 14      |
| Rated voltage (II/2)(V)   | 630     |
| Rated voltage (III/2) (V)   | 400     |
| Rated voltage (III/3)(V)  | 250     |
| Rated impulse voltage (II/2)(KV)  | 4       |
| Rated impulse voltage (III/2)(KV)   | 4       |
| Rated impulse voltage (III/3)(KV)   | 4       |
| Conductor cross section solid. min (mm²)  | 0.14    |
| Conductor cross section solid.max (mm²)   | 1.5     |
| Conductor cross section stranded. min (mm²)                                     | 0.14    |
| Conductor cross section stranded. max (mm²)                                     | 1.5     |
| Conductor cross section flexible, with min ferrule without plastic sleeve (mm²) | 0.25    |
| Conductor cross section flexible, with max ferrule without plastic sleeve (mm²) | 1       |
| Conductor cross section flexible, with min ferrule with plastic sleeve (mm²)    | 0.25    |
| Conductor cross section flexible, with max ferrule with plastic sleeve (mm²)    | 1       |
| 2 conductors with same cross section, solid, min (mm²)                          | 0.14    |
| 2 conductors with same cross section, solid, max (mm²)                          | 1       |
| 2 conductors with same cross section, stranded, min (mm²)                       | 0.14    |
| 2 conductors with same cross section, stranded, max (mm²)                       | 0.75    |
| Screw thread  | M2.5    |
| Slotted screwdriver size (Blade thickness x Width)(mm)                          | 0.6x3.5 |
| Rated torque (N.m)  | 0.4     |
| Stripping Length (mm)   | 6~7     |

## Connection data-UL

|  |      |
|--|------|
| Rated voltage (UL/CUL Group B)(V)                | 300  |
| Rated current (UL/CUL Group B)(A)                | 13.5 |
| Rated voltage (UL/CUL Group D)(V)                | 300  |
| Rated current (UL/CUL Group D)(A)                | 10   |
| Min. solid wire connection (AWG) acc. to UL/CUL  | 30   |
| Max. solid wire connection AWG acc. to UL/CUL    | 16   |
| Min. stranded wire connection AWG acc. to UL/CUL | 30   |
| Max. stranded wire connection AWG acc. to UL/CUL | 16   |

## Environment & Safety

|                                 |     |
|---------------------------------|-----|
| Finger protection (YES or NO)   | YES |
| Operating temperature. max (°C) | 120 |
| Operating temperature. min (°C) | -40 |

## UL Recognized

|                            |       |
|----------------------------|-------|
| Wire Range (Group B)(AWG)  | 30~16 |
| Rated voltage (Group B)(V) | 300   |
| Rated current (Group B)(A) | 13.5  |
| Wire Range (Group D)(AWG)  | 30~16 |
| Rated voltage (Group D)(V) | 300   |
| Rated current (Group D)(A) | 10    |

## CUL Recognized

|                            |       |
|----------------------------|-------|
| Wire Range (Group B)(AWG)  | 30~16 |
| Rated voltage (Group B)(V) | 300   |
| Rated current (Group B)(A) | 13.5  |
| Wire Range (Group D)(AWG)  | 30~16 |
| Rated voltage (Group D)(V) | 300   |
| Rated current (Group D)(A) | 10    |

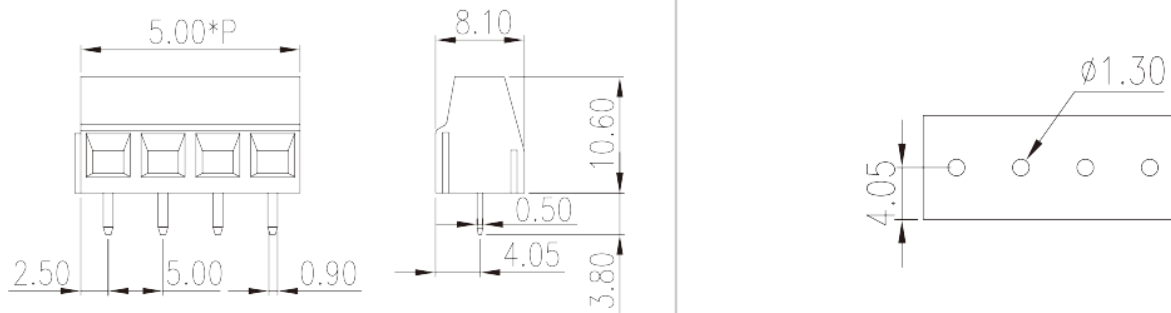
## VDE Approval

|                               |         |
|-------------------------------|---------|
| Wire Range (mm <sup>2</sup> ) | 0.2~1.5 |
| Rated voltage (V)             | 400     |

Rated current (A)

14

## Drawings



## Approvals

