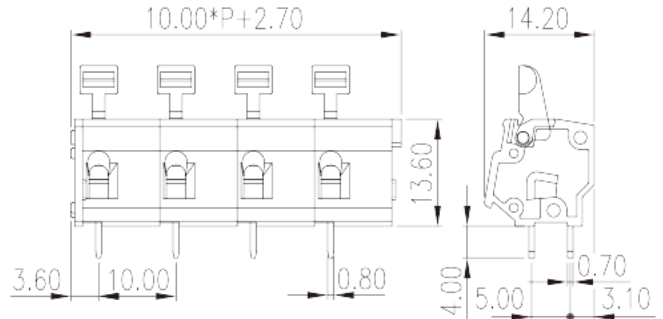
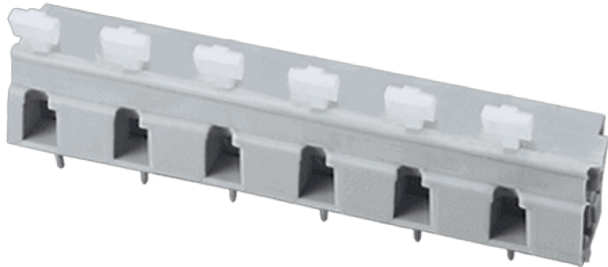


# WKR100A-XXP

PCB Terminal Blocks &gt; PCB Terminal Blocks

Date:2025-12-19Version:V1



The web catalog is for reference only. Dinkle remains the right of product modification and engineering change of the design. The final product is made according to engineering drawing.

## Product Description

Pitch : 10.00mm, 300V, 15A

## General information

|  |  |
|--|--|
| Short description                      | PCB Terminal Blocks, Spring clamp connection |
| Category                               | PCB Terminal Blocks                          |
| Pitch (mm)                             | 10   |
| Color                                  | Grey (default)                               |
| Connection method                      | Spring clamp connection                      |
| Type of locking                        | Without                                      |
| Length (mm)                            | $10.00 \cdot P + 2.70$                       |
| Width (mm)                             | 14.2   |
| Height (mm)                            | 13.6   |
| Pin demensions (Thickness x Width)(mm) | 0.7x0.8                                      |
| PCB hole diameter (mm)                 | 1.20~1.30                                    |
| Number of positions                    | 02P~24P                                      |
| Level                                  | Single level                                 |

## Material information

|                     |    |
|---------------------|----|
| Insulation material | PA |
|---------------------|----|

|  |                   |
|--|-------------------|
| Insulation material group                    | I                 |
| Flame retardant rating , compliant with UL94 | V0                |
| Insulation resistance                        | □500MΩ at DC 500V |
| Conductor material                           | COPPER ALLOY      |
| Plating of conductor surface                 | Tin PLATED        |

## Connection data-IEC

|  |      |
|--|------|
| Rated voltage (V)  | 750  |
| Rated current (A)  | 24   |
| Rated voltage (II/2)(V)  | 1000 |
| Rated voltage (III/2) (V)  | 1000 |
| Rated voltage (III/3)(V)   | 630  |
| Rated impulse voltage (II/2)(KV)   | 8    |
| Rated impulse voltage (III/2)(KV)  | 8    |
| Rated impulse voltage (III/3)(KV)  | 8    |
| Conductor cross section solid. min (mm <sup>2</sup> )  | 0.5  |
| Conductor cross section solid.max (mm <sup>2</sup> )   | 2.5  |
| Conductor cross section stranded. min (mm <sup>2</sup> )                                     | 0.5  |
| Conductor cross section stranded. max (mm <sup>2</sup> )                                     | 2.5  |
| Conductor cross section flexible, with min ferrule without plastic sleeve (mm <sup>2</sup> ) | 0.25 |
| Conductor cross section flexible, with max ferrule without plastic sleeve (mm <sup>2</sup> ) | 1.5  |
| Conductor cross section flexible, with min ferrule with plastic sleeve (mm <sup>2</sup> )    | 0.25 |
| Conductor cross section flexible, with max ferrule with plastic sleeve (mm <sup>2</sup> )    | 1.5  |
| Stripping Length (mm)  | 6~7  |

## Connection data-UL

|   |     |
|---|-----|
| Rated voltage (UL/CUL Group B)(V)               | 300 |
| Rated current (UL/CUL Group B)(A)               | 15  |
| Rated voltage (UL/CUL Group C)(V)               | 300 |
| Rated current (UL/CUL Group C)(A)               | 15  |
| Rated voltage (UL/CUL Group D)(V)               | 600 |
| Rated current (UL/CUL Group D)(A)               | 5   |
| Min. solid wire connection (AWG) acc. to UL/CUL | 28  |

|  |    |
|--|----|
| Max. solid wire connection AWG acc. to UL/CUL    | 12 |
| Min. stranded wire connection AWG acc. to UL/CUL | 28 |
| Max. stranded wire connection AWG acc. to UL/CUL | 12 |

## Environment & Safety

|                                 |     |
|---------------------------------|-----|
| Finger protection (YES or NO)   | YES |
| Operating temperature. max (°C) | 120 |
| Operating temperature. min (°C) | -40 |

## UL Recognized

|                            |       |
|----------------------------|-------|
| Wire Range (Group B)(AWG)  | 28~12 |
| Rated voltage (Group B)(V) | 300   |
| Rated current (Group B)(A) | 15    |
| Wire Range (Group C)(AWG)  | 28~12 |
| Rated voltage (Group C)(V) | 300   |
| Rated current (Group C)(A) | 15    |
| Wire Range (Group D)(AWG)  | 28~12 |
| Rated voltage (Group D)(V) | 600   |
| Rated current (Group D)(A) | 5     |

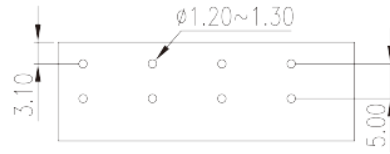
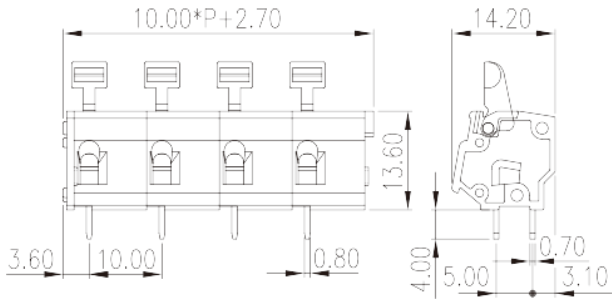
## CUL Recognized

|                            |       |
|----------------------------|-------|
| Wire Range (Group B)(AWG)  | 28~12 |
| Rated voltage (Group B)(V) | 300   |
| Rated current (Group B)(A) | 15    |
| Wire Range (Group C)(AWG)  | 28~12 |
| Rated voltage (Group C)(V) | 300   |
| Rated current (Group C)(A) | 15    |
| Wire Range (Group D)(AWG)  | 28~12 |
| Rated voltage (Group D)(V) | 600   |
| Rated current (Group D)(A) | 5     |

## VDE Approval

|                               |         |
|-------------------------------|---------|
| Wire Range (mm <sup>2</sup> ) | 0.5~2.5 |
| Rated voltage (V)             | 750     |
| Rated current (A)             | 24      |

## Drawings



## Approvals

