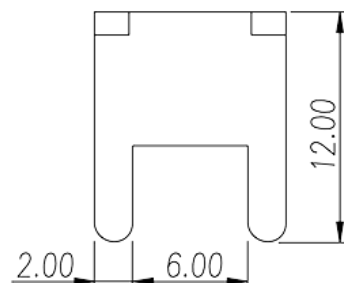
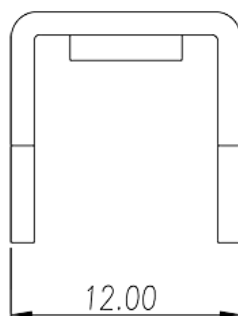


# P-831

Blocos Terminais de Barreira &gt; Terminal de fio

Date:2026-06-26Version:1.2



The web catalog is for reference only. Dinkle remains the right of product modification and engineering change of the design. The final product is made according to engineering drawing.

## Descrição do Produto

Pitch : 8.00 /10.80 mm ,1.2x2.0mm, 85A

## Informação geral

Pequena descrição	Barrier terminal blocks , Quick terminal blocks
Categoria	Quick terminal blocks
Espaçamento (mm)	8.00 / 10.80
Dimensões do pino (espessura x largura) (mm)	1.2x2.0

## Informações materiais

Material do condutor	Copper Alloy
Chapeamento de superfície condutor	Tinned

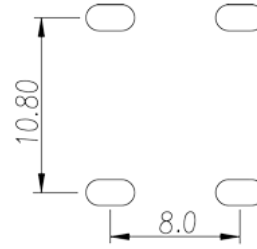
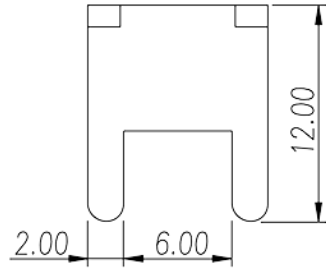
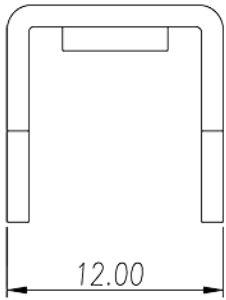
## Dados de conexão-IEC

Rosca	M5
-------	----

## Aprovações VDE

Corrente nominal (A)	85
----------------------	----

## Desenhos



## Aprovações

