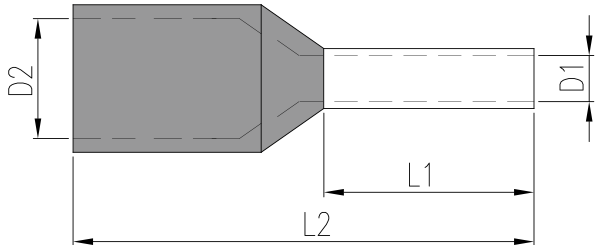









管狀絕緣端子



工具 > 壓著端子 > 管狀絕緣端子



規格說明

Diameter AWG (mm²)	Part number	Package		Size (mm)				DIN 46228/4 color
		Pcs / bag	Pag / box	D1	D2	L1	L2	
24 (0.2)	DN00206D	1000	10	0.75	1.9	6	10	 Light Blue
	DN00208D					8	12	
22 (0.34)	DN00306D	1000	10	0.8	1.9	6	10	 Turouise
	DN00308D					8	12	
20 (0.5)	DN00506D	500	10	1.0	2.6	6	12	 White
	DN00508D					8	14	
	DN00510D	500	8			10	16	
18/20 (0.75)	DN00706D	500	8	1.2	2.8	6	12	 Grey
	DN00708D					8	14	
	DN00710D					10	16	
	DN00712D					12	18	
18 (1)	DN01006D	500	6	1.4	3.0	6	12	 Red
	DN01008D					8	14	
	DN01010D					10	16	
	DN01012D					12	18	
16 (1.5)	DN01508D	500	4	1.7	3.5	8	14	 Black
	DN01510D					10	16	
	DN01512D					12	18	
	DN01518D					18	24	
14 (2.5)	DN02508D	500	4	2.2	4.2	8	14	 Blue
	DN02510D	500	3			10	16	
	DN02512D					12	18	
	DN02518D					18	24	

管狀絕緣端子



工具 > 壓著端子 > 管狀絕緣端子

12 (4)	DN04010D	500	2	2.8	4.8	10	17	● Grey
	DN04012D					12	20	
	DN04018D					18	26	
10 (6)	DN06012D	500	1	3.5	6.3	12	20	● Yellow
	DN06018D					18	26	
7 (10)	DN10012D	200	1	4.5	7.6	12	22	● Red
	DN10018D					18	28	
5 (16)	DN16012D	200	1	5.8	8.8	12	22	● Blue
	DN16018D					18	28	
4 (25)	DN25016D	100	1	7.3	11.2	16	30	● Yellow
	DN25018D					18	30	
	DN25022D					22	36	
2 (35)	DN35016D	100	1	8.3	12.7	16	30	● Red
	DN35018D					18	32	
	DN35025D					25	39	
1 (50)	DN50020D	50	1	10.3	15.0	20	36	● Blue
	DN50025D					25	40	
2 / 0 (70)	DN70021D	50	1	13.5	16.0	21	37	● Yellow
3 / 0 (95)	DN95025D	50	1	14.7	18.0	25	44	● Red
4 / 0 (120)	DN96027D	20	1	16.7	20.0	27	48	● Blue
250kcmil (150)	DN97032D	20	1	19.5	23.0	32	58	● Yellow