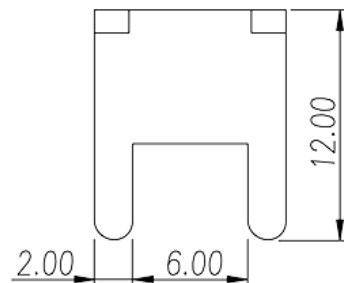
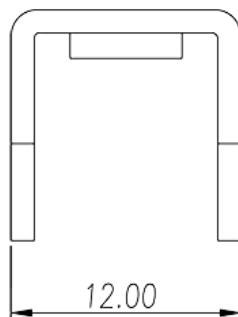
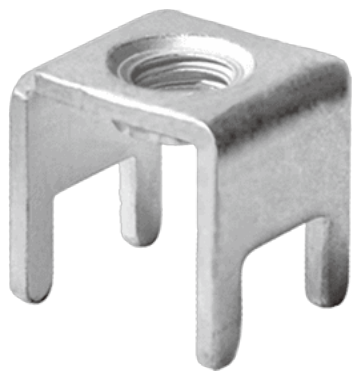


P-831

柵板式端子台 > 獨立端子

下載日期:2026-04-17版次:1.2



目錄僅供參考，實際規格仍依照產品工程圖面為準

產品介紹

Pitch : 8.00 / 10.80 mm , 1.2x2.0mm, 85A

一般資訊

產品概述	Barrier terminal blocks , Quick terminal blocks
產品類型	Quick terminal blocks
產品間距 (mm)	8.00 / 10.80
出腳尺寸 (厚度___ x 寬度___mm)	1.2x2.0

材料資訊

導體材料	Copper Alloy
導體表面鍍層	Tinned

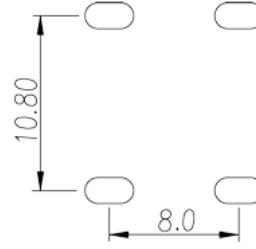
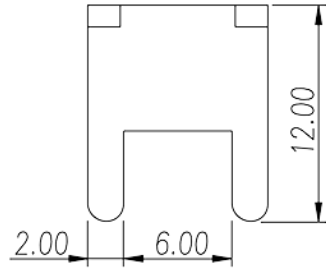
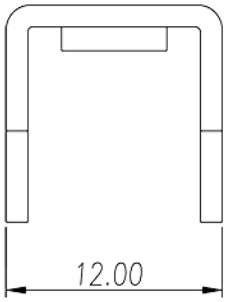
連接數據-IEC

螺紋規格	M5
------	----

VDE認證參數

額定電流 (A)	85
----------	----

圖面



認證

