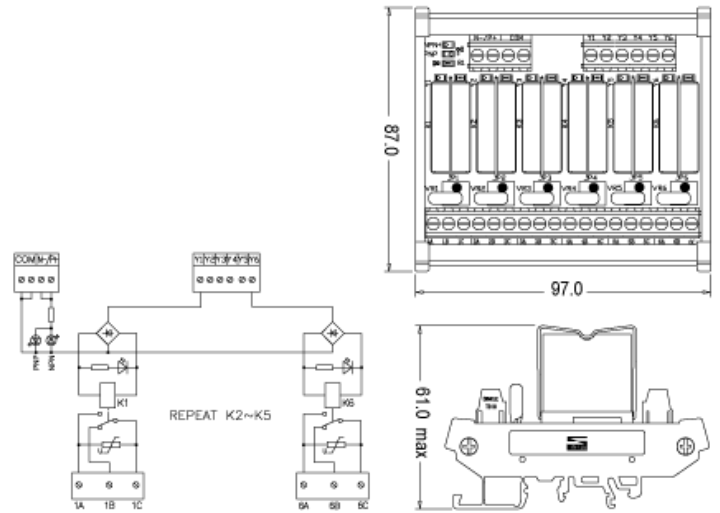


RM024D-1C06C-2AM

Relay Board



Specification

Interface Module Order Number	RM024D-1C06C-2AM
Order Information	N/A
Relay Spec.	G2R-1-E 24VDC / OMRON
Type	DO Realy
Input Voltage	24VDC
Type of Input Singal N/P	N/P
Input connection	Terminal Block
Output Voltage	250VAC / 16A
Output connection structure	1C
Output with Varistor	YES
Output Connection with Jumper	NO
Number of Poles (Control Side)	6
Type of Terminal Block	Europe Terminal
Input Current	26mA
Power Indication Light	LED / Green
Signal Indication Light	LED / RED
Control Side/ wire size	24-12AWG
Field side / wire size	24-12AWG
L x W x H mm	97 x87 x61
Operating Temperature	-20~+55°C
Fuse	N/A