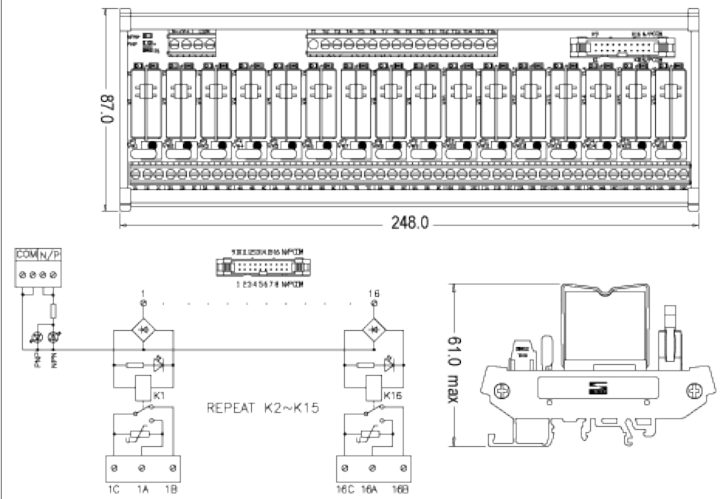
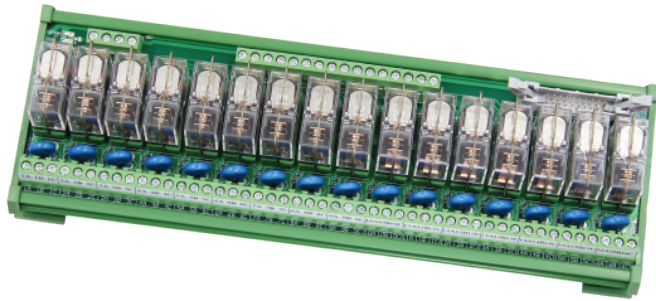


RM024D-1C16C-6AM

Relay Board



Specification

Interface Module Order Number	RM024D-1C16C-6AM
Order Information	N/A
Relay Spec.	G2R-1-E 24VDC / OMRON
Type	DO Realy
Input Voltage	24VDC
Type of Input Singal N/P	N/P
Input connection	Terminal Block+Box header
Output Voltage	250VAC / 16A
Output connection structure	1C
Output with Varistor	YES
Output Connection with Jumper	NO
Number of Poles (Control Side)	16
Type of Terminal Block	Europe Terminal
Input Current	26mA
Power Indication Light	LED / Green
Signal Indication Light	LED / RED
Control Side/ wire size	IDC 20P Scoket/22-14AWG
Field side / wire size	24-12AWG
L x W x H mm	248 x87 x61
Operating Temperature	-20~+55°C
Fuse	N/A