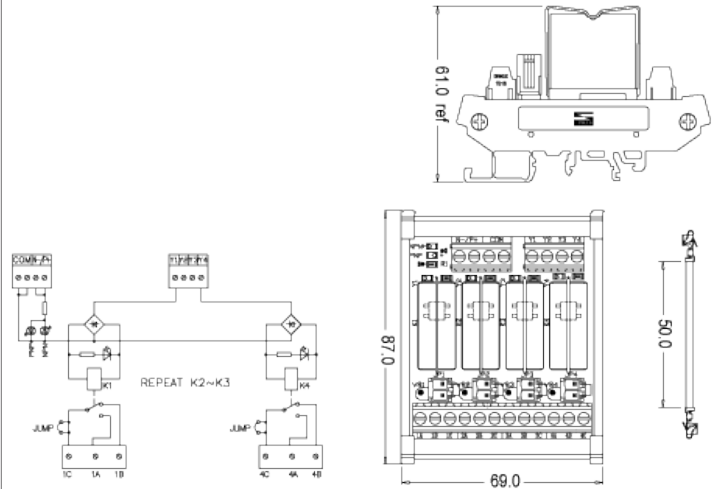


RM024D-1C04C-2BM

Relay Board



Specification

| | |
|--------------------------------|-----------------------|
| Interface Module Order Number | RM024D-1C04C-2BM |
| Order Information | N/A |
| Relay Spec. | G2R-1-E 24VDC / OMRON |
| Type | DO Realy |
| Input Voltage | 24VDC |
| Type of Input Singal N/P | N/P |
| Input connection | Terminal Block |
| Output Voltage | 250VAC / 16A |
| Output connection structure | 1C |
| Output with Varistor | NO |
| Output Connection with Jumper | YES |
| Number of Poles (Control Side) | 4 |
| Type of Terminal Block | Europe Terminal |
| Input Current | 26mA |
| Power Indication Light | LED / Green |
| Signal Indication Light | LED / RED |
| Control Side/ wire size | 24-12AWG |
| Field side / wire size | 24-12AWG |
| L x W x H mm | 69 x 87 x 61 |
| Operating Temperature | -20~+55°C |
| Fuse | N/A |