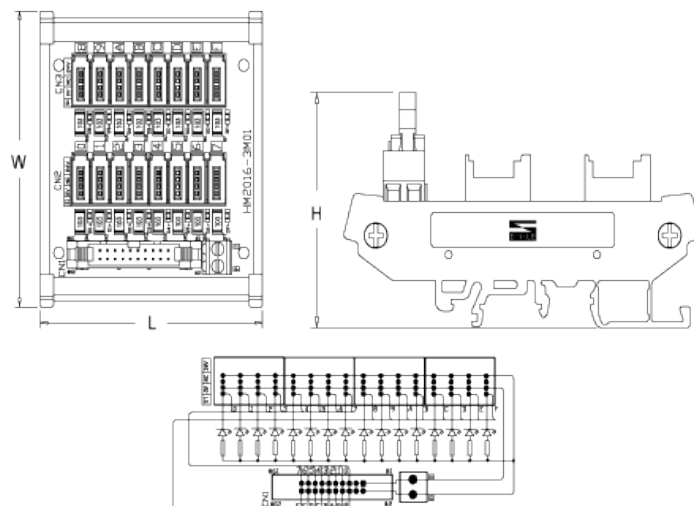
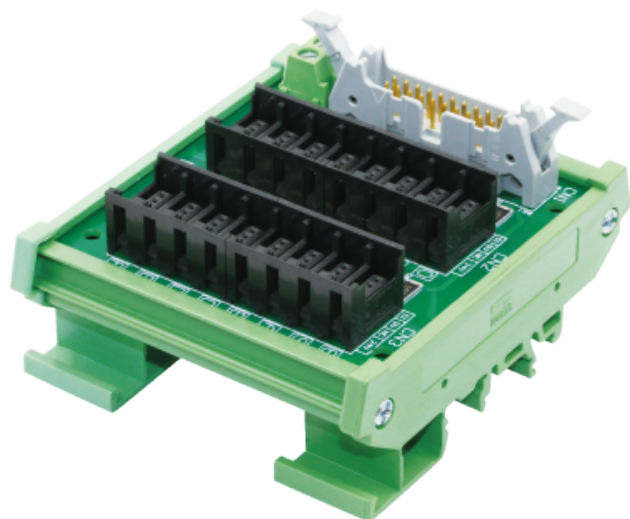


HM2016-3M01CL

Interface Module



Specification

Type	Direct Terminal Board
Rated Voltage	24VDC
Rated Current	1A
Control Side	3M IDC Socket
Field Side	3M Mini Clamp IDC
Signal Indication Light	LED / Red
Operating Temperature	-20~ + 85°C

Order Information

Interface Module Order Number	L X W X H (mm)
HM2016-3M01CL	74.5 X 74.0 X 52.0