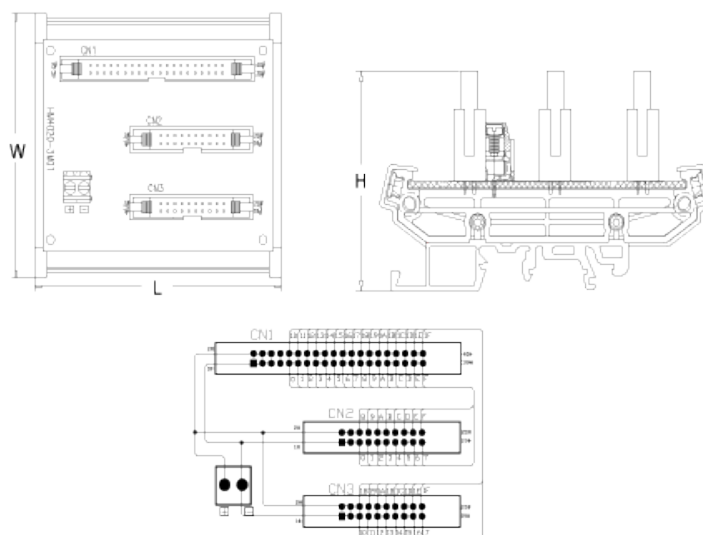
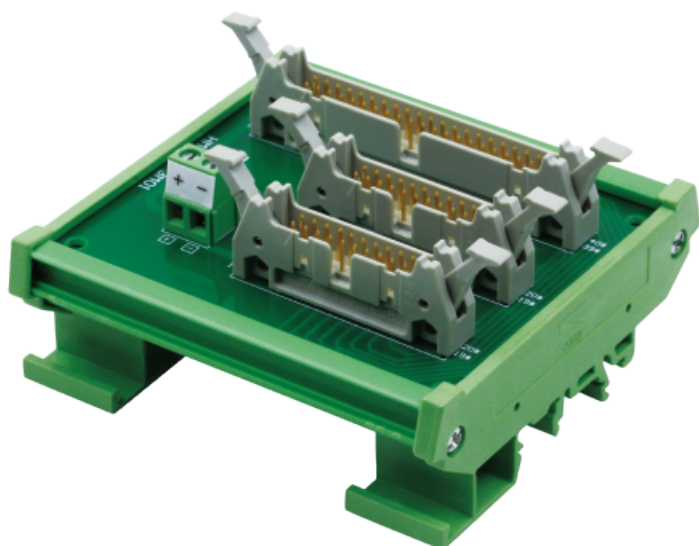


# HM4020-3M01CL

Interface Module



## Specification

Type	Direct Terminal Board
Rated Voltage	250V
Rated Current	1A
Control Side	3M IDC 40p Socket
Field Side	3M IDC 20p Socket
Operating Temperature	-20~ + 85°C

## Order Information

Interface Module Order Number	L X W X H (mm)
HM4020-3M01CL	90.0 X 87.0 X 52.0